



winter | spring 2014

# THE QUARTERLY

THE JAMES RENWICK ALLIANCE

Marilyn Henrion

*Chicago Windows 1337, 2013*

## JAMES RENWICK ALLIANCE QUARTERLY

### EDITOR

Clemmer Montague

### ASSISTANT EDITOR

Johanna Thompson

### ART DIRECTOR

Donna Sicklesmith-Anderson

### PHOTOGRAPHERS

Miriam Rosenthal

Dennis McCloud

Clemmer Montague

### WRITERS

Rebecca Ravenal, Johanna Thompson, Barbara Wolanin, Phil Brown, Pati Young

### COPY EDITORS

Johanna Thompson

James Renwick Alliance  
4405 East West Highway, Suite 510  
Bethesda, MD 20814  
Phone 301 907-3888 / Fax 301 907-3855

*The Quarterly* is published three times a year by the James Renwick Alliance, an independent national nonprofit organization, created to recognize the achievements of America's craft artists and to foster scholarship, education, and public appreciation of craft art. Founded in 1982, the Alliance supports the nation's showcase of contemporary American craft, the Smithsonian American Art Museum's Renwick Gallery in Washington, D.C. The opinions expressed therein are not those of the James Renwick Alliance, its board of directors or the Smithsonian American Art Museum's Renwick Gallery and its staff. *The Quarterly* is published for members of the James Renwick Alliance and is not for sale.

Disclaimer: The editor assumes full responsibility for all errors in proof-reading and editing of all articles in *The Quarterly*. Errors are not the fault of the James Renwick Alliance, its officers or members nor the Smithsonian American Art Museum.

## JAMES RENWICK ALLIANCE OFFICERS

### PRESIDENT

Giselle Huberman

### VICE PRESIDENT, PROGRAMS

Pat Arnold

### VICE PRESIDENT, DEVELOPMENT

Brigitte Savage

### TREASURER

Brenda Erickson

### SECRETARY

Marsha Gold

## JAMES RENWICK ALLIANCE STAFF

Cicie Sattarnilasskorn  
Administrator

Sandra Guzmán

Special Projects Manager

# From the president...

Ah Spring!!! We have been waiting for you during a long, cold, frigid, dreary winter. Spring!!! Doesn't that word conjure for you images of joy, fun, warmth and hope?

Well, we can give you all that, and more:

Let's just start with Spring Craft Weekend, March 27–30. There's your joy. Joy to be honoring our own wonderful and very deserving members Deena and Jerry Kaplan as our One-of-a-Kind recipients. So we start with that. Joy to learn from our distinguished educators Dan Dailey, Peter Held, Glen Kaufman, and Patti Warashina. Joy and excitement to meet the Ambassador of the Kingdom of the Netherlands and be welcomed at his residence. What joy!! Joy to dress up in black and white for our gala and bid and win fabulous trips and art objects. And please don't forget the joy of savoring a great brunch in the company of our honored educators.

Fun. Yes, fun!! In early May, you could not have more fun than joining Michael Janis during his workshop, painting with dust. With glass dust. Can you imagine that? Yes, yes, you can do it!!

Oh, and then there is Akio Takamori regaling us with stories, showing us his sensual ceramics. That's warmth for you. Real warmth. Can you wait until the end of May for that?

And hope. Well, that's my job. I hope you will join us in all our fantastic and varied activities. And hope you will continue to support our wonderful organization.



Giselle Huberman, JRA President

### JRA BOARD MEETINGS\*

Tuesday, April 29 @7:30 p.m.

Saturday, June 14 @2 p.m.

\*Dates and times are subject to change



### ON THE COVER

Marilyn Henrion's piece *Chicago Windows 1337*, 2013, (cover) and Leon Niehues' basket, *A Great Man*, 2013, (left), which he made especially for JRA, are available for bids at the Spring Craft Weekend auction on Saturday, March 29. Photos courtesy of the artists.

## DEENA AND JERRY KAPLAN ARE TRULY ONE-OF-A-KIND

What does it take for one's peers to bestow a title of significance upon you? To be recognized as making significant contributions to an organization and a community?

Imagination, energy, generosity and a darn good eye. Those attributes describe the James Renwick Alliance 2014 One-of-a-Kind recipients Deena and Jerome (Jerry) Kaplan.

The imagination to fall in love with photographs of a house in a craft magazine and see how one's own house could be given the same feel. The energy over 25 years to learn about this new world called craft, to transfer that knowledge into an outstanding art collection and to continue to nurture this knowledge. The generosity to immerse oneself in the craft community as volunteers, supporters of its projects and programs and to contribute in a major way to its development and future.

And most of all...to have the eye to spot the best and to take it home to live with.

That has been the philosophy of a lifetime for the Kaplans. Deena was born with the collecting DNA and can't help herself. Jerry, whose interest rests in fine wood working, migrated from building boat models to experimenting with turning wood. They combined these interests when they began to furnish their current house in 1990 by acquiring fine hand crafted furniture.

However, their main interest has been the support of the Smithsonian American Art Museum, the parent museum of the Renwick Gallery of American Craft and ultimately the James Renwick Alliance, the faithful and energetic support organization of the Renwick Gallery.

As with so many JRA members, their original interest was traveling with the group to learn about craft. The rich network of JRA members' contacts means that doors were open to visit private homes and to meet curators and administrators; in other words, to get the inside scoop on what's going on in the craft community.

## ABOUT THE RENWICK GALLERY

The Smithsonian American Art Museum celebrates the vision and creativity of Americans with works of art in all media spanning more than three centuries.

The museum's branch for craft and decorative arts, the Renwick Gallery, located on Pennsylvania Avenue at 17th Street NW, Washington, D.C., will be closed from December 8, 2013, until a renovation is complete in late 2015 or early 2016. In the meantime, the Smithsonian American Art Museum facilities at F & G Streets between 7th & 9th Streets will be used for James Renwick Alliance activities. Hours are daily from 11:30 a.m. to 7 p.m. except December 25. Admission is free.

Metro stations: Gallery Place (Red, Yellow and Green lines) and Metro Center (Orange, Red and Blue). Smithsonian Information: 202 633-1000; 202 633-5285 (TTY). Museum information (recorded): 202 633-7970. Website: [americanart.si.edu](http://americanart.si.edu). Follow the museum on Twitter, Facebook, Flickr, ArtBabble, iTunes and YouTube.



Ron Blunt



One could say that Patti Warashina's ceramic sculpture, titled *Slice of Life*, describes Deena and Jerry Kaplan's love of craft. Photo by Miriam Rosenthal

Then the SOFA shows in New York and Chicago extended that knowledge. JRA was at SOFA Chicago there with its Saturday brunch: inviting artists, museum personnel, nonprofits' officers, prospective members and providing a time when JRA members who rarely see each other can network and exchange ideas.

In the wake of the studio glass movement, many substantial private glass collections were developing—and seeing them with the JRA, the Kaplans caught the bug. Their collection soon grew to include glass art and has continued to expand its horizons, thanks in part to the JRA. As Jerry walks through the house, he points out pieces that were acquired from artists they met on the trips or that were from SCW auctions.

The One-of-a-Kind award recognizes significant contributions to the craft community, and the Kaplans have enriched the entire gamut of craft with significant gifts to the Center for Art in Wood (formerly Wood Turning Center) in Philadelphia, and the Carnegie Museum in Pittsburgh,

gifting 23 major pieces to enhance its craft collection.

But the major emphasis for them has been the Renwick Alliance. In 1997 Deena was chair of Spring Craft Weekend for the 15th anniversary of the JRA. For that special occasion, she arranged for a candy maker to create centerpieces for the tables. Each one focused on a year and represented a piece of art. Deena and Jerry hosted the first Masters of the Medium Award dinner at their home. Deena has been on various committees including membership. Their major contributions in the past few years have been to the Lloyd E. Herman Curator of American Craft endowment, the Renwick Gallery renovation project and the JRA's efforts to raise funds to name a gallery for the James Renwick Alliance.

For all these reasons Deena and Jerry are now the JRA's One-of-a-Kind recipients. We are so grateful to have had the benefit of their intense love of craft and open-hearted support of the organization.—*Johanna Thompson*

## MATERIALISM: THE MEDIUM OR THE MESSAGE

# Spring Craft Weekend 2014

This city is bursting with color now: the brilliant colors of the daffodils, the pinks and reds of the Japanese magnolias and cherry blossoms and the stunning white of the Bradford pears make our city a special place to be in late March. There is another reason as well—the coming together of James Renwick Alliance patrons, artists, friends and diplomats. That is what Spring Craft Weekend is all about this year as the main theme of materialism weaves itself in and out of all happenings each day of the weekend—at private homes, an intriguing panel discussion, a visit to an ambassador's residence, awards and auction. Here is how the weekend stacks up. Note: this is an abbreviated version of the weekend's events.

### THURSDAY EVENING March 27, 2014

#### The James Renwick Alliance Evening

6:30 – 8:30 p.m.

Deena and Jerry Kaplan—the 2014 One-of-a-Kind Award recipients—host a reception at their home, celebrating all Patrons, the 2014 Distinguished Educators, past One-of-a-Kind Award recipients and 2014 Spring Craft Weekend volunteers and committee members.

Special guests are Distinguished Educators:

**Dan Dailey**, Massachusetts College of Art and Design, Emeritus

**Peter Held**, Curator, Ceramics Center and Brickyard Gallery, Arizona State University

**Glen Kaufman**, University of Georgia, Emeritus

**Patti Warashina**, University of Washington, Emerita

Attire: Business | Valet parking

By invitation only to the above groups. To become a Patron, please contact the JRA office at 301-907-3888 or e-mail [admin@jra.org](mailto:admin@jra.org).

1. CINDY HICKOK

*Breakfast at the National Gallery*, 2011

Rayon thread, machine stitching

17" x 27" x 1" \$3,600

Photo by Rick Wells

2. WARREN MACKENZIE

Lidded jar, oatmeal glaze, painted flower, 2013

Stoneware (2009 Master of the Medium—Ceramics)

10" x 7 1/2" x 7" \$1,250

Donated by Lucy Lacoste Gallery

Photo by George Bouret

3. JIYOUNG CHUNG

*The Gentle Whisper*, 2013

One-of-a-kind handmade paper

34" x 23" \$1,700

Donated by Jiyoung Chung

4. MARKOW AND NORRIS

*fabulous babies*, 2013 (multicolor)

Woven glass

6" x 6" x 2" \$495

Donated by the artists

Photo by Javier Agostinelli



### DUTCH AMBASSADOR HOSTS RECEPTION ON CAUCUS DAY

Ambassador Rudolf Simon Bekink, an economist, was born on Sept. 30, 1950, in Assen, a town of about 67,000 people in the northeastern part of the Netherlands. He has been working in international affairs of

the Netherlands government since 1976. His positions have included ambassador to Belgium, Sweden and People's Republic of China and now the United States, Ministry of Foreign Affairs and Economic Affairs in Greece, Angola and the East Asia, Chargé d'affaires to Ghana and Deputy Head of Mission to OECD Paris and Director of Protocol in charge of state visits to the Netherlands. He also has organized state visits of Queen Beatrix and the travels of Crown Prince Willem-Alexander and Princess Maxima.

He married Austin, Texas, businesswoman Gabrielle de Kuyper, in August 2011. Ambassador Bekink has three grown sons.





4.



5.



6.



7.

**FRIDAY March 28, 2014**

**Caucus Day** (for Caucus members and Patrons only)

**1:30 – 5:00 p.m.**

Tours to private collections and Jewelerswerk Galerie.

**5:00 – 6:30 p.m.**

Reception at the residence of **H.E. Rudolf Bekink**, Ambassador of the Kingdom of the Netherlands to the United States of America and 2014 Spring Craft Weekend Honorary Chair.

**Jan Kennis**, Cultural Attaché of the Embassy of the Kingdom of the Netherlands to the United States of America, will address the subject of contemporary Dutch craft, art and architecture.

(See sidebars on Ambassador Bekink and Mr. Kennis.)

2347 S Street, NW, Washington, D.C.

Patrons and Caucus members meet buses at the DeSales Street entrance of the Mayflower Hotel (corner of Connecticut Avenue, NW & DeSales Street, NW) at 1:15 p.m. for a prompt departure at 1:30 p.m. Parking is available at the PMI garage at 1725 DeSales Street, NW. Nearest metro stop is Farragut North. Buses will return to the Mayflower Hotel after the reception.

Attire: Business

\$100 per person (\$60 tax deductible). No charge for Patrons.

Barbara Berlin and Pati Young, Co-chairs



8.

**JAN KENNIS ADDRESSES JRA PATRONS AND CAUCUS MEMBERS**

Cultural Attaché of the Netherlands to the US and head of Press and Cultural Affairs at the Consulate-General of the Netherlands in New York, Jan Kennis entered the Dutch Foreign Service in 1995 where he has been in the Ministry of Foreign Affairs in The Hague as a Policy Officer at the Department of Development Aid and a Senior Policy Officer at the Directorate of Education and Culture.



He became the new head of Press and Cultural Affairs at the Netherlands Embassy in Hungary in 2005 where he was instrumental in the creation of the Low Festival, a multidisciplinary contemporary cultural festival that introduced Dutch and Flemish culture to the Hungarian audience. For his service to both countries, Mr. Kennis received the prestigious Pro Cultura Hungarica prize in 2012.

Prior to his current assigned, he was Deputy Director of the Dutch Center for International Cultural Activities in Amsterdam.

Jan Kennis is married with four daughters.

5. **TOMMY SIMPSON**  
*Friends Melt Chocolate*, 2010  
Mixed wood  
32" x 42" x 19" \$4,200  
Photo by John Poliszuk

6. **NANCY WORDEN**  
*Our Dear Girls*, 2013  
Necklace: red brass, vinyl tubing, freshwater pearls, glass and polycarbonate  
12 1/4" x 8" x 1/2" \$4,800  
Donated by Nancy Worden  
Photo by Rex Rystedt

7. **MARY ZICAFOOSE**  
*Prairie #3*, 2010  
Weft-faced net tapestry: hand wrapped, dyed and woven silk/bamboo on linen warp  
53" x 29" \$6,000  
Photo by Kirby Zicafoose

8. **JENNIFER HERMANN**  
*A.K.A. Raven's Songs*, 2012  
Necklace and matching earrings: sterling silver, copper, vinyl records  
27" chain with 5" feather \$620

**SATURDAY MORNING March 29, 2014****Panel Discussion** *Materialism: The Medium or the Message*

10:30 a.m. – 12 noon

Smithsonian American Art Museum's Nan Tucker McEvoy Auditorium, G Street entrance, NW, Washington, D.C.

Barbara Wolanin, Chair and Johanna Thompson, Reception

(See related article, page 12.)



9.

9. SUSAN BEINER  
*Synthetic Reality*, 2008  
Porcelain, wood  
28" x 37" x 8" \$3,200

10. JEFF SHAPIRO  
*Temple of Pompeii*, 2013  
Stoneware  
19" x 13" x 7" \$2,800

11. CHUNGHIE LEE  
*No Name Women*, 2006  
Paper *bojagi* (wrapping cloth)  
36" x 42" \$1,900

12. MELISSA STERN  
*Brothers*, 2011  
Sculpture: clay, wood, paint  
23" x 18" x 6" \$2,600  
Donated by Melissa Stern



10.



11.



12.

**SATURDAY EVENING March 29, 2014****Black and White Ball, Auctions and One-of-a-Kind Award**

6:30 – 10:30 p.m.

Willard InterContinental Hotel

1401 Pennsylvania Avenue NW, Washington, D.C. 20004

James Renwick Alliance Spring Craft Weekend silent and live auctions feature contributions of the 2014 Distinguished Educators, events and adventures ranging from evenings with food and wine, trips, and sensational work made by today's artists working in the materials of clay, fiber, glass, metal and wood. The evening's highlight is the presentation of the One-of-a-Kind Award to Deena and Jerry Kaplan by Judith Chernoff and Jeffrey Bernstein.

**6:30 p.m.** Patrons early registration and preview reception**7:00 p.m.** General check in, cocktail hour, silent auction**8:00 p.m.** Dinner, live auction, One-of-a-Kind Award presentation

Attire: Black and White with a splash of craft

\$350 per person (\$150 tax deductible). No charge for Patrons. Valet parking \$10.

Bonnie Schwartz, Ball chair; Anne Mehringer, Auction chair; Martin Gammon of Bonhams, Auctioneer; Diane Grainer and Sandy Mitchell, Seating; Judith Weisman, Installation chair; Ann Byron, Behind-the-Scenes chair.



13.

**SUNDAY MORNING March 30, 2014**  
**Distinguished Educator Awards Brunch**  
 10 a.m. – 1:00 p.m.

The St. Regis Hotel  
 923 16th and K Street, NW, Washington, D.C. 20006

A celebration of craft education honoring four Distinguished Educators: Dan Dailey, Peter Held, Glen Kaufman and Patti Warashina.

Every even year, the James Renwick Alliance selects up to five Distinguished Educators for their outstanding ability to increase awareness and appreciation for the history and traditions within the field of craft, a reputation for excellence and innovation in education and for significant contributions to American education in the craft field.

\$95 per person (\$35 tax deductible). No charge for Patrons. Valet parking validated at the front desk \$20.

Nikki O'Neill and Paul Parkman, Co-chairs; Anthony Glander, Audio-visual technician



16.



14.

- 13. **MATT HYLECK**  
 Four square dinner plates and soup/salad bowls, 2013  
 Stoneware, shino, woodash, reduction  
 Plate: 10" x 10" x 1"  
 Bowl: 3" x 8" x 8" \$528
- 14. **ANDY PAIKO**  
 40 Under 40: Craft Futures artist  
*Nautilus (DC)*, 2013  
 Blown, sculpted glass  
 Finishing work by DC Glassworks  
 Metalwork by Chris Shea  
 10" x 5" x 5" \$625  
 Donated by the artists  
 Photo by Anything Photographic



17.

- 15. **TAMARA LAIRD**  
 Necklace: two polished porcelain charms on silver chains, 2013  
 32" x 9" x 1" \$450  
 Donated by Tamara Laird  
 Photo by Miriam Rosenthal
- 16. **JESSE ROBINSON**  
 Letter opener, 2008  
 Forged bronze  
 1/8" x 1 1/2" x 9" \$450  
 Donated by Jesse Robinson  
 Photo by Miriam Rosenthal



18.

- 18. **PHIL BROWN**  
 Black cherry bowl, 2011  
 Turned wood  
 15" x 6" x 15" \$400  
 Donated by Phil Brown  
 Photo by Miriam Rosenthal



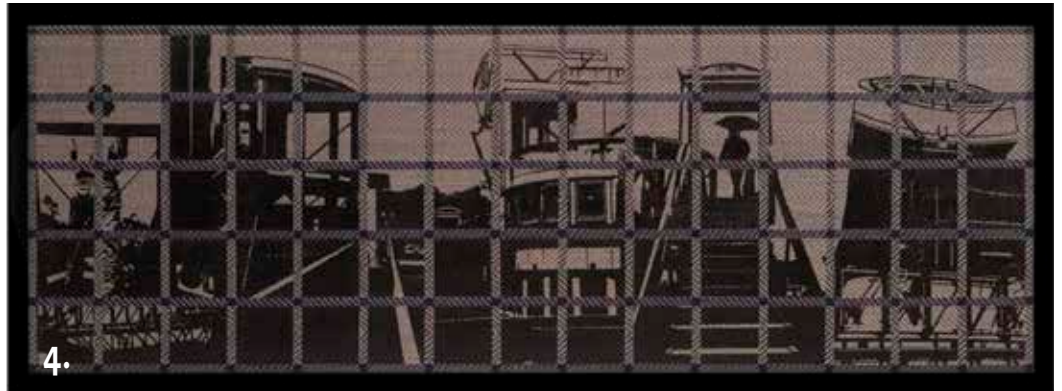
15.

- 17. **MICHAEL MCCARTHY**  
 Eight dessert plates  
 Wood-fired, salt-glazed porcelain  
 7 1/2" x 11 1/2" x 11 1/2" \$240



19.

- 19. **CHRISTY OATES**  
 40 Under 40" Craft Futures artist  
*September 25, 2011: Herman Cain*, 2012  
 Wood: alder, walnut, bubinga, zebra wood, purpleheart, wenge;  
 includes a process video on DVD  
 19" x 19" with maple frame \$1,800



**2014**  
**SCW LIVE**  
**AUCTION**







7.

1. NIKKI O'NEILL  
*Indigo Corallite*, 2014  
Slumped glass plate and bowl  
2" x 15 1/2" x 15 1/2" \$1,200  
Donated by Nikki O'Neill
2. LEON NIEHUES  
*A Great Man*, 2014  
Basketry: white oak, emery cloth,  
brass screws  
20" x 14" x 14" \$3,400
3. PATTI WARASHINA  
*Figure F (Conversation Series)*, 2011  
Low-fire clay, underglaze, glaze,  
mixed media  
18" x 22" x 11" \$10,500  
Photo by Rob Vinnedge
4. GLEN KAUFMAN  
*Lizzy on Kitayama Dori*, 1988  
hand-woven silk, screen print,  
impressed metal leaf  
From his private collection  
10" x 29" x 2" \$2,400  
Photo by Walker Montgomery
5. DAN DAILEY  
*Five Men Swimming*, 1999  
Waterford blue crystal: wheel cut,  
engraved, sandblasted, acid polished  
Made at the Waterford factory  
in Ireland  
From the Dan Dailey Archive  
18 1/2" x 10 1/2" x 10 1/2" \$58,000  
Photo by Terry Murphy
6. AKIO TAKAMORI  
*Sleeping Girl in Yellow Stripe Dress*,  
2013  
Stoneware with underglazes  
9" x 26" x 13" \$12,000  
Photo by Vicky Takamori



9.

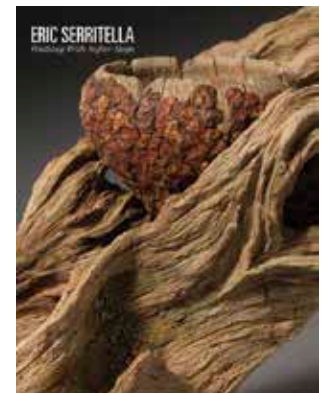


10.



8.

7. VIVIAN BEER  
*Anchored Candy #1*, 2008  
Steel, automotive paint, patina  
52" x 20" x 27" \$10,500  
Artist will weatherproof for  
outside use  
Photo by Alison Swiatocha
8. MARILYN HENRION  
*Chicago Windows 1337*, 2013  
Mixed media, pigment printing  
on silk, hand quilting  
30" x 24" x 3/4" \$2,500  
Donated by Marilyn Henrion  
Photo by Jean Vong
9. ANDY PAIKO  
*Syringe (DC)*, 2013  
Blown, sculpted glass  
30" x 5" x 7" \$2,350  
Finishing work by DC Glassworks  
Metalwork by Chris Shea  
Donations of the artists  
Photo by Anything Photographic
10. ERIC SERRITELLA  
*Charred Birch Beer Stein*, 2013  
Trompe l'oeil clay sculpture  
of "charred birch"  
15" x 8" x 5" \$4,200  
Accompanied by the book,  
*ERIC SERRITELLA*  
*Walking With Softer Steps*



SPRING CRAFT WEEKEND 2014 EVENTS AND ADVENTURES

**JAMES RENWICK ALLIANCE TRAVELS TO MANHATTAN, BROOKLYN AND LONG ISLAND APRIL 23–27, 2014**

New Yorkers know how to do everything in great style, and Susan and Fred Sanders and Marilyn Henrion have put together an extraordinary action-filled four and a half days to prove that fact.

The itinerary spans the gamut of artists currently creating artwork in Manhattan and Brooklyn, including many whose works were introduced in the 2012 Renwick

Gallery 40 *Under 40: Craft Futures* exhibition. Venues will be in Greenwich Village, Chelsea and the Museum of Art and Design and then to Brooklyn to visit the Brooklyn Museum of Art for two special exhibitions and an introduction to the new facilities of UrbanGlass. A day to remember will be the visit to Long Island to Jack Lenor Larsen’s Longhouse Reserve in East Hampton, NY. Jack, a 2001 recipient of JRA’s Masters of the Medium Award for fiber/baskets and a 2012 Distinguished Educator, will be on hand to lead us. The weekend will also be filled with memorable culinary experiences.

The tour is limited to 26. Cost is \$985 per person with a \$300 per person contribution to the James Renwick Alliance. Transportation to and from New York, parking fees and hotel lodging are at the expense of each person.

**ABOVE,** The welcome reception on Wednesday evening is at 505 LaGuardia Place, the I.M. Pei building on New York University campus. Marilyn Henrion, host, will present her hand quilted mixed media interpretation of *Sylvette*, the Picasso statue. **TOP RIGHT,** The Brooklyn Museum. **RIGHT,** View of Peter’s Pond and Dale Chihuly’s blue cobalt spears from the Jack Lenor Larsen house veranda. **BELOW,** Washington Square Park and Hotel, photo by Victoria Harmer.



Marilyn Henrion

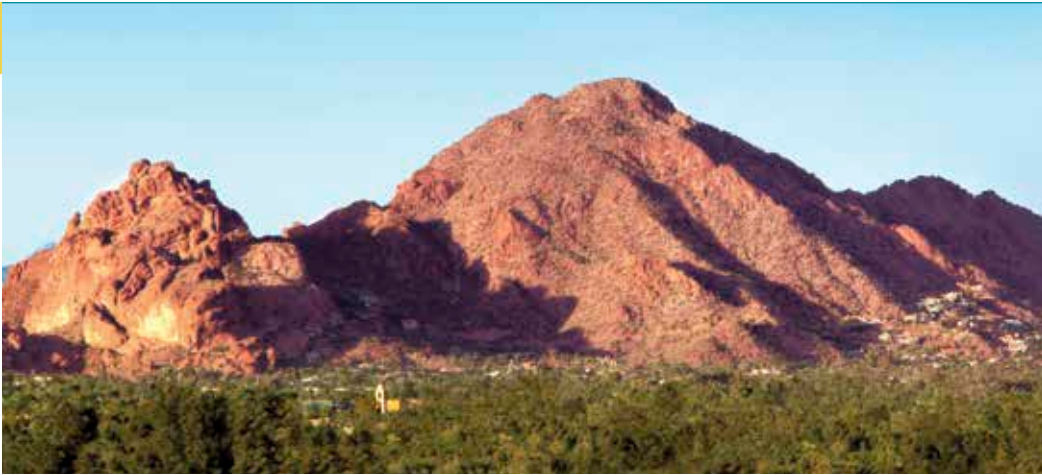


Fred Sanders



Joanne Sohn / Longhouse Reserve





## PHOENIX/SCOTTSDALE CRAFT TOUR, FEBRUARY 11–16, 2015

Join us for five days and four nights visiting the sun-drenched Valley of the Sun, abounding in private collections, artist studios and insider private museum tours. Tour leader will be Peter Held, curator of ceramics at the newly-opened Ceramics Center & Brickyard Gallery. Peter is also one of four 2014 JRA Distinguished Educators.

Highlights of the tour include: Welcome dinner on the rooftop

terrace of the home of Joanne and James Rapp, fabulous private craft collections of Sara and David Lieberman, Midge and Jerry Golner, and folk art collection of Kathleen Vanesian. Studio visits include Susan Beiner, Tom and Carol Eckert, Kurt Weiser and Howard Werner. Cultural institutions include the Arizona State University Art Museum's Ceramics Center & Brickyard Gallery, Frank Lloyd Wright's Taliesin

West, the studio and home of Paolo Soleri, Heard Museum of Native Arts and ASU's new James Turrell Skyspace: *Air Apparent*.

The tour is limited to 25. Cost is \$875 per person with a \$300 per person contribution to the James Renwick Alliance. The cost does not include air travel, hotel and services not indicated in the itinerary. Since the trip is next February, hotel details will be announced later.



## JALEO DINNER FOR 2

Compliments of Chef/Owner José Andrés, Rob Wilder and ThinkFoodGroup, featuring the dishes of José Andrés and including manager's selection of one bottle of wine, tax and gratuity.

Under the direction of famed chef José Andrés, Jaleo offers an impressive assortment of tapas, the traditional small dishes of Spain, as well as savory paellas, superb sangrias and a fine selection of Spanish wines and sherries in a festive, casual atmosphere. Created in 1993 by Rob Wilder, Roberto Alvarez and José Andrés, Jaleo has become a local institution.

Valid at Jaleo-Bethesda only. Expires March 15, 2015. Advance reservations required. Value \$150.



ABOVE, Arizona Center. TOP, Camelback Mountain. Photos courtesy of Visit Phoenix

## Panel Discussion: Materialism, A Hot Topic



Elisabeth Agro

Saturday morning's panel discussion will be moderated by **Elisabeth Agro**, The Nancy M. McNeil Associate Curator of American Modern and Contemporary Crafts and Decorative Arts at the Philadelphia Museum of Art. Panelists Distinguished Educators **Dan Dailey**, **Peter Held**, **Glen Kaufman** and **Patti Warashina** add their points of view to the topic, and not always the same opinions.

The lively panel discussion will revolve around the meaning and usefulness of the word "materialism," the theme of Spring Craft Weekend, to describe the craft art movement which began in the 1950s. Dan Dailey proposes Materialism as the name for the movement, giving a new definition to describe the "philosophy of artists who have passionately focused their work on specific materials and devoted their life's work to a single medium."

The event takes place at the Smithsonian American Art Museum's Nan Tucker McEvoy Auditorium, 8th and G Streets entrance, NW, Washington, D.C., G Street entrance only. Starting promptly at 10:30 a.m., the event ends at 12 noon. Barbara Wolanin is the organizer of this discussion. Free and open to the public.

Afterwards, panelists, SCW committee chairs and JRA officers will meet in the Kogod Courtyard for a continuation of the discussion and for lunch, arranged by Johanna Thompson. Others may join in at the café, Dutch treat.



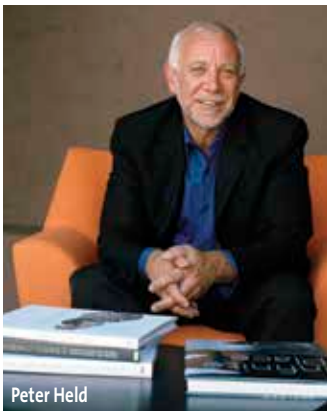
20.



21.



22.



Peter Held



Dan Dailey



Patti Warashina



Glen Kaufman



23.

20. **KAREN THUESEN MASSARO**  
*Harlequin Line*, 2001  
Porcelain  
21" x 8" x 5" \$2,500  
Donated from the Collection of  
Sherley and Bernard Koteen

22. **SUNKOO YUH**  
*To go box*, 2014  
Small ceramic vessel  
7 1/2" x 5" x 5" \$700  
Donated by Sunkoo Yuh

21. **TERRI ANN TOMLINSON**  
*Yin*, 2012  
Cast Koza fiber  
26" x 18" x 2" \$800  
Photo by Clemmer Montague

23. **KATHLEEN TUCCI**  
*Beth Necklace*, 2014  
Recycled bicycle and motorcycle  
inner tube, extruded rubber  
8 1/2" x 16-19" \$300  
Photo by Robert Diamonte

## SPRING CRAFT WEEKEND COMMITTEES

The James Renwick Alliance and the Smithsonian American Art Museum's Renwick Gallery deeply appreciate the dedicated JRA members whose diligent efforts create a fairy-tale weekend to raise funds to support the mission. It takes a lot of people to pull off an event with all the complexities of Spring Craft Weekend, and we are grateful for their contributions of time and effort.

### SPRING CRAFT WEEKEND CHAIR

Clemmer Montague

### BUDGET

Brigitte Savage

### PATRONS

Shirley Jacobs

### COPY EDITORS

Elmerina Parkman  
Johanna Thompson  
Bonnie Schwartz  
Gilbert Schwartz

### HOSPITALITY

Gwen Paulson

### HOTEL AND TRAVEL

Nikki O'Neill  
Clemmer Montague

### INVITATION

Clemmer Montague, *chair*  
Elmerina Parkman  
Johanna Thompson

### DISTINGUISHED EDUCATOR AWARDS

Brenda Erickson, *chair*  
Camille Cook

Reba Immergut  
Elmerina Parkman  
Jerome Paulson  
Chris Rifkin  
Gary Stevens  
Judith Weisman

### CAUCUS DAY

Barbara Berlin, *co-chair*  
Pati Young, *co-chair*

### PANEL DISCUSSION

Barbara Wolanin  
Johanna Thompson

### ONE-OF-A-KIND AWARD

Giselle Huberman, *chair*  
Ben Huberman  
Clemmer Montague

### BLACK AND WHITE BALL

Bonnie Schwartz, *chair*

### BALL SEATING

Diane Grainer  
Sandy Mitchell

### AUCTION

Anne Mehringer, *chair*  
Sharon Buchanan  
Elizabeth Doyle

Marc Grainer  
Mallory Lawson  
Clemmer Montague

### AUCTION EVENTS AND ADVENTURES

Anne Mehringer  
Clemmer Montague

### AUCTION CONTRACTS

Anne Mehringer

### EXHIBITION INSTALLATION

Judith Weisman, *chair*  
Jan Maddox  
Elizabeth Ryland Mears

### BEHIND THE SCENES

Ann Byron, *chair*  
Cindy Calahan  
Johnnie Gins  
Pamela Hill-Bryne

### DISTINGUISHED EDUCATOR AWARDS BRUNCH

Nikki O'Neill, *co-chair*  
Paul Parkman, *co-chair*  
Anthony Glander, *A/V*

### SPECIAL THANKS TO

Cicie Sattarnilasskorn  
JRA Administrator

Sandra Guzmán  
JRA Special Projects Manager

The Smithsonian  
American Art Museum  
Staff

The Renwick Gallery  
Staff

### PUBLICITY

Ann Gilbert

### GRAPHIC DESIGN

Donna Sicklesmith-Anderson

### MAILING

Randi Jacobs

### EVENT PHOTOGRAPHY

Miriam Rosenthal

### ART HANDLING

Fine Art Services

### AUCTIONEER

Martin Gammon,  
Bonhams

## 2014 SCW PATRONS

### RENWICK SOCIETY

Giselle and Benjamin Huberman

### GRAND SALON

Anonymous  
Anne and Ronald Abramson  
Sharon and Robert Buchanan  
Marian and Russell Burke  
Brenda Erickson and Dick Fryklund  
Martin Gammon  
Diane and Marc Grainer  
Deena and Jerry Kaplan  
Shirley Jacobs  
Anne Mehringer and Terry Beaty  
Bonnie and Gilbert Schwartz

### PALM COURT

Fleur Bresler  
Frances and Leonard Burka  
Ryna Cohen  
Arlene and Robert Kogod  
Pati Young

### OCTAGON ROOM

Nedra and Peter Agnew  
Carolyn Alper  
Char Beales  
Barbara and Arnold Berlin  
Judith Chernoff and Jeffrey Bernstein  
Miriam and Leon Ellsworth  
Jere Gibber and J.G. Harrington  
Arlene and Harold Finger  
Reba and Mark Immergut  
Colleen and John Kotelly  
Myra and Stephen Kurzbard  
Alexis and Steven Levine  
Maurine Littleton and Jeffrey Cunard  
Sandy and Norman Mitchell  
Clemmer and David Montague  
Elmerina and Paul Parkman  
Gwen and Jerry Paulson  
Chris Rifkin  
Karen and Michael Rotenberg  
Susan and Fred Sanders  
Carol and Ronald Sekura  
Lenel Srochi-Meyerhoff  
and John Meyerhoff  
Rebecca A.T. and Gary Stevens

### INDIVIDUAL PATRONS

Stanley Asrael  
Cynthia Boyer  
Amelie Burgundger  
Ann Cousins  
Joan Danziger  
Judith Geller  
Marsha Gold  
Marilyn Hardis  
Mallory Lawson  
Vivian L. Pollock  
George Andrew Rose  
Eleanor Rosenfeld  
Brigitte Savage  
Jeffrey Spahn  
David Stearman  
Barbara Tober  
Jackie Urow  
Kathryn van Wyk  
Judith Weisman  
Barbara Wolanin

### LIFETIME

Lloyd Herman



24.



26.



25.



27.

24. SYLVIA GOTTWALD  
Brooch, clip-on earrings  
Nacre (mother-of-pearl), cast resin  
Brooch: 3 1/2" x 4 1/2"  
Earrings: 1" \$500  
Donated by Sylvia Gottwald  
Photo by Clemmer Montague

25. JAMIE WALKER  
Cup Form, 2013  
Stoneware, slip, glaze, soda fired  
8 1/2" x 12 1/2" x 8 1/2" \$900  
Donated by Jamie Walker in honor  
of Patti Warashina  
Photo by John Taylor

26. LANNY BERGNER  
Coniform #4  
Aluminum screen, brass and  
aluminum wire, chicken egg,  
glass frit  
40" x 5" x 8" \$2,800

27. MARKOW AND NORRIS  
fire babies, 2013 (red)  
Woven glass  
6" x 6" x 2" \$495  
Donated by the artists  
Photo by Javier Agostinelli

# We Were all Charmed by the Sonya Clark Distinguished Artist Series Weekend



Sonya Clark cautioned the audience at the beginning of her workshop, “If you ask me a question, I’ll answer with a story.” So it was that we spent an enjoyable morning in the art room of the National Cathedral School with Sonya telling stories and, at the same time, learning about her art of fiber.

Fascinated with Josef Albers’ theories about color, Sonya uses these as a jumping off point to examine race and cultural theories. She translates Albers’ iconic studies with squares of colored paper into fiber sculpture, using black combs wrapped in jewel-toned threads. In examining how the colors shift in relation to each other, she is really looking at how we perceive race in relation to the surrounding community and how ordinary objects can become the repository for the stories we tell about ourselves.

On Friday night, Judy Weisman hosted a delicious potluck dinner. Featured prominently in Judy’s fine collection is a soaring 17-foot comb sculpture by Sonya which creates a dramatic entry to the home. Sonya continued her discussion of her philosophy and practice of art in her community at the Sunday afternoon lecture at the Smithsonian American Art Museum’s McEvoy Auditorium.

—Rebecca Ravenal

**ABOVE,** Sonya Clark’s workshop was about color and she demonstrated with skeins of thread. Workshop participants were from left, Sonya Clark, Rebecca Ravenal, Rebecca Stevens, Hillary Steel, Phil Brown, Paul Parkman, Marilyn Hardis and Brenda Erickson. **RIGHT,** Sonya Clark describes the piece from the Variation C series, which she made by commission from the evening’s host, Judy Weisman.

Photos by Clemmer Montague



**ABOVE,** Julie Geschwind wraps a comb with alternating thread colors to demonstrate Josef Albers’ theory of color.

# Michael Janis and Akio Takamori Finish 2013–2014 Distinguished Artist Series

Local glass artist Michael Janis makes his debut on May 3–4 and the well-known and beloved ceramic guru Akio Takamori is coming from May 31–June 1. Each workshop is \$45 for JRA members and \$55 for non-JRA members and includes lunch. The Janis workshop is currently full, but please contact the JRA office at 301-907-3888 if you would like to be placed on the waitlist. Spaces are still available for the Takamori workshop.



## Michael Janis

The architect-turned-glass-art-star Michael Janis is a James Renwick Alliance Distinguished Artist on the weekend of May 3–4. His workshop will take place at the Washington Glass School, from 10 a.m. to 1 p.m. on Saturday, May 3. On Sunday, May 4, at 2 p.m., he will present a slide lecture on his work and career at the Smithsonian American Art Museum's McEvoy Auditorium, followed by a potluck dinner for workshop participants at the home of Giselle and Ben Huberman. The potluck dinner, usually on Saturday night, has been shifted to Sunday because of the performance of the opera *The Magic Flute* at Nationals Park.

Michael was recently featured in *American Craft* magazine as “one of a select number of artists in the world creating sgraffito glass art.” The Creative Glass Center of America dubbed him a “Rising Star of the 21st Century.” His mastery of this difficult technique shows itself in the dreamlike images which he creates by “drawing” with frit powders upon glass which are then fused into painterly panels of subtle depth and luminosity. On Saturday, Michael opens his studio for an in-depth exploration of his process in working with powdered glass, high-fire enamel and decals. He has taught at Penland School and in the United Kingdom as a Fulbright Scholar. His work is included in the collection of the Art Institute of Chicago and numerous private collections.



## Akio Takamori

The workshop Akio Takamori on May 31 is the last of the series for this season. He will address his use of glazes at his workshop at Flux Studios, at Mt. Rainier on Saturday May 31 from 10 a.m. to 1 p.m. A potluck dinner for participants and guests will follow at the home of Barbara and Arnold Berlin. He will talk about his work and his life at the Smithsonian American Art Museum's McEvoy Auditorium at 2 p.m. on Sunday, June 1.

Akio, currently residing in Seattle, was born in Nobeoka, Miyazaki, Japan in 1950. The artist's work, often autobiographical, has focused in recent years on figurative sculpture. The forms he creates of villagers, schoolchildren, shopkeepers and infants have been modeled from memory. Drawing on his childhood in Japan, Takamori creates loose communities of figures made up of individual pieces with unique, carefully crafted identities. His piece *Sleeping Girl in Yellow Stripe Dress* is in the 2014 JRA Spring Craft Weekend live auction.

# Barbara Wolanin and Phil Brown: 2 Collectors Make 1 Great Collection

Although Barbara and Phil did not meet each other until 1997, they were both JRA members and had a strong interest in craft art. They each had modest collections of craft art and found, as they were unpacking and settling into the house they bought together, that their collections were very compatible.

Their joint collection is displayed in the living room, some on furniture Phil made in high school and many in the gallery room. There are wood bowls and sculptures by many artists in addition to the bowls made by Phil. They both enjoy colorful glass, fiber and ceramics, and in the dining room the cabinet of functional ceramic pieces include some made by Barbara years ago. The walls are filled with paintings by people Barbara studied or knew.

From her childhood in Bethesda, Barbara took art classes and majored in studio art in college where she developed a love for art history. She learned ceramics and fiber arts for teaching art in elementary school. She continued with art history, obtaining a Ph.D. and was a professor at a college and university before landing her current position as Curator for the Architect of the Capitol in 1985. She has broad responsibility for conservation of art, not only in the Capitol, but on the grounds and in the Library of Congress. Barbara is deeply involved in the preservation of the historical and artistic heritage of the Capitol and has written the definitive—and beautiful—book on Constantino Brumidi who painted numerous murals in the Capitol in the 19th century. Conserving his murals and Capitol



Miriam Rosenthal

sculpture has been a major task she has overseen. This project still is ongoing.

After growing up in Colorado and majoring in agricultural economics, Phil went to work for the Department of Agriculture and enjoyed a career of helping farmers organize cooperatives to market their products, a job which involved travel all over the country including many trips to Hawaii.

Phil always loved working with wood and started making furniture in high school. A trip to Maine where he saw a lot of craft art provided the impetus to get back to art making. He learned to turn wood in 1975 when he obtained some apple wood from friends who owned an orchard. Since the pieces were too small for furniture making, he bought a lathe, a pictureless instruction

book and taught himself to turn bowls. He enhanced his skill and knowledge and met others in the burgeoning field of woodturning by participating in symposia organized by Albert LeCoff and the American Association of Woodturners. He became professional, showing his bowls in galleries and juried art shows and winning numerous awards.

Phil mostly works with wood from local trees being cut down, and he enjoys using different species of wood. He loves revealing the patterns of the grain, the spalting caused by fungus and even the “bug holes” that make each piece unique. In addition to the JRA, he has a deep commitment to national and local organizations of wood turners, two of which he helped found.

Fortunately, from these very divergent paths, Barbara and Phil

found each other long after both joined the JRA in the mid 80s. Since then, they have each used their organizational skills to aid the JRA’s work. Phil was on the Board, organizing workshops, serving as Treasurer and participating on the Finance and Acquisition Committees. He also organized wood turning demonstrations to accompany turned wood exhibitions at the Renwick Gallery.

Barbara was on the Distinguished Educator’s Committee, and as a Board member, developed programs for the DAS committee and organized the panel discussion for SCW last year and this, working with distinguished curators. Participating in the JRA and sharing a love of seeing art in museums and craft shows are strong bonds in her life with Phil.



Photos by Clemmer Montague



### BARBARA WOLANIN, CURATOR OF THE CAPITOL EDUCATES, OFFERS SPECIAL TOUR

Barbara Wolanin, curator of the U.S. Capitol and a JRA board member, offered a tour of the Capitol's art collection to those who attended the New Year's Eve party. Fifteen JRA members and friends joined the discussion Saturday, January 11, for this truly wonderful tour of the building to go under major conservation.

The group heard about Constantino Brumidi's murals painted in the Capitol in the late 1850s with additions in the 1870s. They were painted over in dark and muddy colors or covered with the dirt of the years, but conservation efforts begun in the 1980s and still ongoing have uncovered the original beautiful colors, details, and three-dimensional effects.

The art in the U.S. Capitol has been acquired principally for its public, patriotic, and commemorative characteristics. Not conceived as a conventional art collection, the art instead is intended to commemorate for posterity the persons and events of the national history, centered upon the institution of Congress and on the founding of the Republic.

Barbara educated the group on the history of the collection and the current conservation and preservation programs with which she is involved. The group moved from the Visitors Center halls where she showed mockups of the Capitol building from its beginning to the present, then to the Congressional side of the building.

The tour finished with visits to various the parts of the building: one in restoration, one awaiting the future work, and the President's room which has been completely conserved. She also took the group through the rotunda with stories of Brumidi's efforts there and then to the hall of statues. She pointed out conservation efforts of so many parts of the building that the group became well informed on the building's condition before, what it is now and what it will be in the future.



**ABOVE,** Barbara pointed upward at an element in the restoration. **TOP,** The work of Constantino Brumidi in the Rotunda.



San Francisco Bay Bridge

### SPAHN, YOUNG LEAD CAUCUS MEMBERS ON AN ADVENTURE TO SAN FRANCISCO

Caucus member Jeffrey Spahn and I, a JRA board member, are leading a Craft Leaders Caucus study tour to San Francisco and the Bay area on October 14–19.

The itinerary is coming together nicely. We plan to spend a day each in San Francisco, South Bay, Marin and Berkeley, as well Sacramento. Highlights will include many private collections, some treasured JRA members not to be missed and some very special new ones, such as Larry Ellison's private Japanese gardens, Dorothy Saxe, Lois and Eddie Anderson, Susan Cummins and Rose Roven.

We will be visiting the San Francisco Museum of Craft & Design to see the *Wendy Maruyama: Executive Order 9066* exhibit and have a special preview tour of *Amber Cowan: Assembled/Fused and Glass*. In Sacramento, we will visit the brand new 150,000 square foot Crocker Art Museum as well as enjoy visits to two private collections of some of the city's chief patrons.

We will be visiting a variety of artist's studios and hope to plan a few specialty shows of local Bay Area artists. Last but not least, San Francisco is a great place to eat, so many nice meals will be planned at hosted venues and restaurants including one night with the best view we can find of "Bay Lights" the iconic light sculpture designed by world-renowned artist Leo Villareal. Stay tuned for more details and registration forms coming this spring.—Pati Young

# Variety is the Spice of Life: Sign up for 3 Local Tours and a Seashore Weekend

James Renwick Alliance members have a unique opportunity to take part in local tours of a museum and two sculpture gardens. Each tour is led by JRA members who are familiar with each venue. Cost of each local tour is \$100 per person and includes admission fees and lunch, when applicable, and a donation to the James Renwick Alliance. The weekend in Cape May is \$200 per person. Please contact the James Renwick Alliance office to reserve a space: [admin@jra.org](mailto:admin@jra.org) or 301-907-3888.



## ANNMARIE SCULPTURE GARDEN AND ARTS CENTER, THURSDAY, JUNE 19

Join us on Thursday, June 19, for a docent-led tour of the outdoor sculpture at Annmarië Sculpture Garden and Arts Center, Solomon's Island, Maryland followed by high tea and a tour of indoor exhibits. The 30-acre sculpture garden features a path through the woods past permanent and loaned sculpture, including over 30 works on loan from the Smithsonian Hirshhorn Museum and the National Gallery of Art. Our day ends with a no host dinner at a local restaurant.—*Brigitte Savage*



## AMERICAN VISIONARY ART MUSEUM, BALTIMORE, JUNE 12

Caravan with us for a day of laughter, joy and enlightenment as we visit this eccentric, wild and crazy museum. In addition to the permanent collection, we'll view the current exhibit called *Human, Soul, & Machine, The Coming Singularity!* about the serious impact of technology on our lives. David Hess, a well-known local metal artist, will join us for lunch in Mr. Rain's Fun House restaurant, for an overview of his many works permanently on display at the museum, including his amazing metal staircase.—*Bonnie Schwartz*

Photo by Rob Shelley, National Gallery of Art, Washington, Gallery Archives



## NATIONAL GALLERY OF ART SCULPTURE GARDEN TOUR, MAY 10

A group of 12 are invited to a guided tour of the National Gallery of Art's Sculpture Garden, followed by a lunch at the Capitol Grill on Saturday, May 10, at 10:30 a.m. On view during the tour are the newly installed mosaic by Marc Chagall along with dramatic sculptures by leading 20th century sculptors such as Joan Miro, Alexander Calder, Claes Oldenburg and Roy Lichtenstein. The Sculpture Garden's magnificent dancing fountain and lush landscape will delight everyone. There is no charge for the Sculpture Garden Tour. Rain date is June 8.—*Sandy Mitchell*

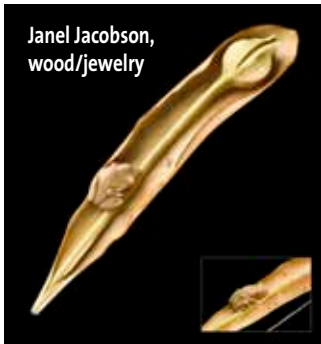


## A WEEKEND IN CAPE MAY

Enjoy a weekend in Victorian Cape May, New Jersey, the nation's first National Historic Landmark City, at the Jennie Lane Cottage. With three bedrooms (plus a sofa bed), two full bathrooms, a kitchen, living and dining rooms and a porch, the cottage is ideal for families and small groups of friends and cozy enough for a couple. The location is only a few steps from most restaurants, shopping and the beach. You can stay for up to three nights on any off-season weekend (mid-September to mid-May) when it isn't already rented. We are suggesting May 23–25 or after Labor Day in September. \$200 per person.

## 2014 SMITHSONIAN CRAFT SHOW APRIL 10–13

Ruth Conant and Mary Beth Nethercutt, 2014 Craft Show Chairs



Janel Jacobson,  
wood/jewelry

Widely regarded as the country's most prestigious juried show and sale of fine American sculptural objects and design, the Smithsonian Craft Show is produced by the Smithsonian Women's Committee to support the Smithsonian Women's Committee Grants Fund. Grants are awarded to address the Smithsonian's Four Grand Challenges: "Unlocking the Mysteries

of the Universe, Valuing World Cultures, Understanding and Sustaining a Biodiverse Planet and Understanding the American Experience."

- A dazzling exhibition of creativity, innovation and technical mastery at the elegant and historic National Building Museum
- 123 distinguished craft artists selected in a 2014 "Quest for the Best"
- A sale of one-of-a-kind or limited edition works in 12 media.

National Building Museum, 401 F Street, NW, Washington, D.C. 20001, Judiciary Square Metro Station (red line)

<b>Thursday</b> , April 10	10:30 a.m. – 8:30 p.m.
<b>Friday</b> , April 11	10:30 a.m. – 8:30 p.m.
<b>Saturday</b> , April 12	10:30 a.m. – 5:30 p.m.
<b>Sunday</b> , April 13	11 a.m. – 5 p.m.

Preview Night Party: Wednesday, April 9 6:30 – 9:30pm

\$100 Individual

\$85 Young Patrons (under 40)

General Admission:

\$15 One-Day

\$25 Two-Day Pass

Special Group rate \$13  
(10 or more by advance purchase)

On-line Ticket Sales:

\$13 One-Day

\$23 Two-Day Pass

Children 12 & under: Free  
(No strollers permitted)

Tickets by advance reservation:  
888-832-9554

or [austrpr@si.edu](mailto:austrpr@si.edu)

Online sales

February 15 – April 5 at

[SmithsonianCraftShow.org](http://SmithsonianCraftShow.org)



Elaine Hyde, glass



Terry Evans, wood

### SPECIAL EVENTS

#### Thursday, April 10, 6:00 pm

A Conversation with Wendell Castle and Albert Paley, moderated by Michael Monroe, National Building Museum Auditorium.

Michael Monroe, past curator-in-charge of the Renwick Gallery, will lead a discussion with two leading figures of the American contemporary studio craft movement, both of whom are at the zenith of their careers. Each is represented by an iconic work in the Renwick Gallery's permanent collection, Wendell Castle's *Ghost Clock*, a stellar example of trompe l'oeil sculpture and Albert Paley's *Portal Gates*, a masterpiece of iron work. Wine will be served.

\$50 (Admission to the Craft Show included.)

Tickets by advance reservation: 888-832-9554 or [austrpr@si.edu](mailto:austrpr@si.edu)

#### Saturday April 12, 12 Noon

Lunch with Roxanne Roberts—Life as a Journalist  
National Building Museum Commissioner's Suite (2nd floor)

Roxanne Roberts is a feature writer and columnist in the *Washington Post's* style section. She has been with the *Washington Post* for 25 years, most recently as co-author of *The Reliable Source*.

\$50 (Admission to the Craft Show included.)

Tickets by advance reservation: 888-832-9554 or [austrpr@si.edu](mailto:austrpr@si.edu)

#### Sunday April 13, 2 p.m.

David Mitchell and Emerging Designers  
National Building Museum Auditorium

A panel discussion on new approaches to integrating crafts into modern homes with David Mitchell, one of Washington DC's most popular, influential, and respected interior designers. David is a 2010 recipient of the Designers Choice award from *Home and Design Magazine* and a member of the Washington Design Hall of Fame. His use of video and "before and after" photos have been influential in the design industry.

#### Online Auction

Please browse and bid on many fine craft items including works by Wendell Castle and Albert Paley. Unique dining, theater and tour experiences are also available.

[www.smithsonianauctions.org](http://www.smithsonianauctions.org)

Auction goes live: Monday, April 7, 2014

Auction closes: Tuesday, April 22, 2014 (9:00 PM)

All Online Auction proceeds support Smithsonian education, conservation, exhibitions and research.

# The JRA Rocked Broadway on New Year's Eve

Photos by Dennis McCloud



**ABOVE,** "Tomorrow" featured the Annie sextet in red blouses, white collars and, of course, red hair: Reba Immergut, Giselle Huberman (holding Sandy, a.k.a. Billie), Mallory Lawson, Clemmer Montague and Brigitte Savage.

**LEFT,** Dolly Levi, a.k.a. Bonnie Schwartz, descends the staircase in true Dolly style: dramatic hat with lots of feathers, shaggy fur, long gloves and the longest cigarette holder in the world.

**BELOW,** Le Store offerings: baskets, glass, jewelry, etc.

The third New Year's Eve Party, held at the beautiful art and craft-filled home of Giselle and Ben Huberman, was an elegant and fun evening with a casino, Occasions Caterers, Inc., providing their usual delicious fare, and everyone having a great time. One could not ask for a more perfect party venue nor more gracious and generous hosts.

Clemmer Montague, assisted by Marilyn Hardis, Johanna Thompson, Nicholas Houhoulis, Kathrin Halpern and Nelio Vargas Sejas, did a super job as "Le Store" CEO with many art and craft items, food offerings, jewelry galore, as well as trips. One day trips were offered to Glenstone Museum, Annmarie Sculpture Garden and Arts Center, the Visionary Art Museum, the National Gallery of Art Sculpture Garden, Cape May and the Capitol building. The BYOB glass making class by Nancy Weisser sold out.

Broadway musicals were celebrated this year with Nedra Agnew starting off as Sally Boles

from *Cabaret*. Then Paul Parkman led a group in "Give Our Regards To Broadway," accompanied by the terrific Doo Wap Girls: Kathy Furlong, Marilyn Hardis, Sandy Mitchell and Elmerina Parkman. Our very own adorable Annie (Giselle Huberman) along with her dog Sandy (Billy), together with her red-headed, white collared friends Reba Immergut, Clemmer, Brigitte Savage and I sang "Tomorrow." Dolly Levi from *Hello Dolly*, (Bonnie Schwartz) wrapped up our tribute in rare form dressed to make Carol Channing envious. We're not planning on giving up our day jobs for Broadway, but it sure was fun! Thank you to all the above committee members along with our pianists, Ben Huberman and Jerzy Sapiyewski and opera singer Nick Houhoulis for helping to ring in the New Year with a truly wonderful evening.

Income above expenses for the evening is around \$6,000, which goes into the Dale Chihuly Publication Fund.—*Mallory Lawson*





**ABOVE,** The glass factory: Rhoda Baer, Pat Arnold and Nikki O'Neill.

**MIDDLE,** The two blacksmiths compare coal: Board member Chris Shea and new member Jesse Robinson.

**TOP,** Master of Ceremonies Marc Grainer and Cabaret pianist Ben Huberman.



**ABOVE,** Lucky girl Gwen and Jerry Paulson, Norman Mitchell and Bonnie Schwartz play at the casino.

Scott Suchman



James Renwick Alliance members will be attending Washington National Opera presents "Opera in the Outfield," featuring the simulcast of Mozart's *The Magic Flute* on May 3 at Nationals Park. Costumes and staging are designed by Jun Kaneko.

### OPERA IN THE OUTFIELD...JOIN US AT NATIONALS PARK ON MAY 3. FREE

Jun Kaneko, the ceramic sculptor with multiple aspects to his remarkable talent and the JRA 2011 Master of the Medium of Ceramics, will be represented in Washington, D.C. at two venues this spring.

The first will be an exhibition of his ceramic sculptures in the Kennedy Center Hall of Nations, opening on April 14 and closing

on May 25. Balancing elements of both American and Japanese aesthetics, the installation will feature pieces from his series of HEADS, Dangos ("rounded form" or "dumpling" in Japanese), and Tanuki (a mischievous shape-shifter commonly portrayed as a large, stout badger).

The second venue is in Washington National Opera's production

of Mozart's *The Magic Flute* which will use his stunning mystical sets and costumes. The nine performances open on Saturday, May 3, and Jun and his wife Ree Schonlau, will be in attendance at the Kennedy Center Opera House for the evening. Meantime, at "Opera in the Outfield," a free WNO simulcast at Washington Nationals Park, 50 James Renwick Alli-

ance members, families and friends will get together to share the opera broadcast first hand. Seats will be located in a section near a handicapped accessible area. Information on reserving a seat, parking and use of Metro services will be available the first week in April when ticket sales for "Opera in the Outfield" will open.

*The Magic Flute* is a fairy tale and a reflection on spiritual enlightenment. Sung in English and featuring Jun's colorful kaleidoscope of sets and costumes, it's also a perfect opera for all JRA members, whether an opera fan with regular subscription tickets or one who has never seen an opera. It will be an opportunity to share a free performance in the company of other craft lovers as the beloved Kaneko's world comes alive on stage.

Photos by Miriam Rosenthal



### DAY TRIP COVERS FIBER, GLASS, WOOD AND MOSAICS

James Renwick Alliance members were treated to new shows in Wilmington, DE, and Philadelphia on a one-day outing on Saturday, March 8.

Philadelphia is celebrating fiber with the 8th fiber biennial at Synderman-Works Gallery and other venues featured fiber in their shows including The Delaware Art Museum.

Other venues were the Center for Art in Wood and Wexler Gallery with a talk by *40 Under 40: Craft Futures* artist Andy Paiko.

The day ended with a visit to Philadelphia Magic Gardens for an exhibition of the region's mosaicists, offering groundbreaking approaches to mosaic.



**ABOVE,** The "Tour of New Shows in Wilmington and Philadelphia" on Saturday, March 8, began with a visit to the Delaware Museum of Art in Wilmington and allowed for a photograph of the tour participants.

**ABOVE LEFT,** Snyderman-Works Gallery—a JRA Gallery Caucus member—is the best place to learn about jewelry and fiber. Darcy Walker and Sandy Mitchell exercise their DNA inheritance by "shopping."

**RIGHT,** Susan Jenkins and Mary Tobin pay special attention to the exhibition *Roy Superior: Patent Models For a Good Life* at the Center for Art in Wood.





### AMERICAN CRAFT COUNCIL DIRECTOR AND MAGAZINE EDITOR ADDRESS CAUCUS AT EVENING OF LEARNING PROGRAM

Craft Leaders Caucus members gathered at the home of Arnie and Barbara Berlin for a wonderful brunch and a presentation by **Chris Amundsen**, executive director of the American Craft Council, and **Monica Moses**, editor-in-chief of *American Craft* magazine on Sunday, January 26. Before brunch, the group was warmed with beverages and delicious hors d'oeuvres, followed by dining amid tables bursting with a joyous array of colors and patterns and a lively discussion. Barbara, chair of the Caucus, and Arnold Berlin were the hosts at their home for the annual evening of learning.

Chris and Monica discussed the roles of the ACC as “chronicler, convener, tastemaker and provocateur.” They reviewed the history of the organization and gave an overview of its current state and future mission. Then they invited the audience to provide feedback on favorite features in *American Craft*, advice for improvements and ideas for upcoming stories. Not being a shy group, the discussion continued long after the last mouthfuls of chocolate tart were spooned up; everyone left with plenty of food for thought.—*Rebecca Ravenal*



Barbara Berlin, chair, is with Chris Amundsen, director, and Barbara Waldman, Board of Trustees chair.

### CAUCUS SUMMER SOCIAL HONORS ALBERT PALEY

A retrospective survey of the life and work of Albert Paley covering all aspects of his career of nearly 50 years, starting from his student days to his most recent major projects, will open at the Corcoran Gallery of Art on Saturday evening, June 28.



Myers Creative Imaging

The JRA Craft Leaders Caucus members also take part at midday on June 28 with a brunch, honoring Albert as JRA's first 1997 Master of the Medium of Metal/Jewelry. (Other masters for 1997 were ceramics: Peter Voulkos; wood/furniture: Sam Maloof; glass: Harvey Littleton, and fiber/baskets: Ed Rossbach.)

The brunch, still in the planning stages, will take place at the Potomac home of Giselle and Ben Huberman and is being organized by Elizabeth Doyle. Costs and registration information will be announced nearer to the date of the event.

Artwork by Albert Paley can be viewed at the Maurine Littleton Gallery Tuesday through Saturday from 11 a.m. to 6 p.m. and by appointment. The address is 1667 Wisconsin Ave NW, Washington, DC 20007 (202) 333-9307 [www.littletongallery.com](http://www.littletongallery.com).



Portal Gates by Albert Paley

# Save the Dates!

JRA events in red; Study tours, SCW and NYE offers in blue

## March

27–30 Spring Craft Weekend

## April

4 Glenstone Museum Study Tour, Potomac, MD, 11 a.m.–4 p.m., NYE offer

10–13 Smithsonian Craft Show

23–27 New York–Brooklyn Study Tour, SCW auction

29 JRA Board meeting

## May

3, 5, 7, 8, 10, 11, 15, 17, 18 Washington National Opera's *The Magic Flute* by Wolfgang Amadeus Mozart, costume and set designs by Jun Kaneko, JRA's Master of the Medium of Ceramics 2011

3 Michael Janis Distinguished Artist Series workshop

3 *The Magic Flute* at Nationals Park, free, in the works

4 Michael Janis lecture at the Smithsonian American Art Museum's McEvoy Auditorium, 2 p.m. and potluck dinner

10 National Gallery of Art Sculpture Garden Study Tour, 10:30 a.m., NYE offer

15–23 Craft Leaders Caucus Study Tour to Amsterdam

23–25 Cape May Ladies Weekend, NYE offer

May 31 Akio Takamori Distinguished Artist Series workshop and potluck dinner

## June

1 Akio Takamori lecture at the Smithsonian American Art Museum's McEvoy Auditorium, 2 p.m.

3–26 *Grace of Craft* at Capital Arts Network: work of JRA members, curated by Giselle Huberman

8 Rain date for National Gallery of Art Sculpture Garden Study Tour

12 American Visionary Museum Study Tour, Baltimore, NYE offer

14 JRA Board meeting

19 Annmarie Sculpture Garden and Arts Center Study Tour, 2 p.m., Solomon's Island, MD, NYE offer

28 Craft Leaders Caucus Summer Social Brunch with Albert Paley

28 Albert Paley Retrospective opens at the Corcoran Gallery of Art

## September

17–20 Providence and RISD Study Tour, SCW auction

28 Albert Paley Retrospective closes

## October

14–19 San Francisco Craft Leaders Caucus Study Tour

30 SOFA Chicago Preview

31 SOFA Chicago opens

## November

1 JRA Brunch at SOFA Chicago, 9–11 a.m.

2 SOFA Chicago closes

## December

6 JRA Day

## February 2015

11–16 Phoenix area, AZ Study Tour, SCW auction, offered by 2014 Distinguished Educator Peter Held

### SPONSOR AN ARTIST

FOR THE BLACK AND WHITE BALL AND/OR THE AWARDS BRUNCH.

CONTACT THE JRA OFFICE:

admin@jra.org; 301 907-3888

## BRAND NEW JRA WEBSITE COMING SOON!

The James Renwick Alliance website has been under redesign and construction for some months and will go live in the near future. The site will feature an upgraded e-commerce platform to facilitate membership renewal and allow individuals to sign up for multiple events and trips at one time.



"About Us" will feature the mission, explain who we are and what we do, provide a historical time and list all the gifts to the Renwick Gallery. It will also include a list of board members, committees, and all award recipients. There will be special sections devoted to events and trips, membership, a calendar of activities, the monthly update of craft events around the world, and special happenings such as Spring Craft Weekend, JRA Day, the New Year's Eve Party, and other fun stuff.

Links to other craft-related activities, organizations, schools, universities, and arts groups will allow members to access many more venues. Finally, the site will include a secured section for JRA board members.

The web committee, headed by Pat Arnold, includes Anne Mehringer, Clemmer Montague, Brenda Erickson, Miriam Rosenthal, Sandy Hoexter, Pati Young, Mary Kay Davis, Brigitte Savage, and Cicie Sattarnilasskorn.



### WE WILL MISS...

**Ambassador Don Mahley**, 71, husband of JRA's Julianna Mahley, passed away after a two year battle with pancreatic cancer on March 1. After a 27-year career in the U.S. Army, he was appointed as the State Department Ambassador serving as Special Negotiator for Non-proliferation. His work on the protocol for the Biological Weapons Treaty, establishing the Office for Prohibition of Chemical Weapons and negotiating the recently signed Arms Trade Treaty are notable. He was known for his love of animals, fantasy baseball, the theater world, the Chicago Cubs, and coaching the speech and debate teams at USMA, and the many friends and colleagues he knew over the years.

In lieu of flowers, memorial contributions can be made in his name to Best Friends Animal Society, 5001 Angel Canyon Road, Kanab, UT 84741. Arrangements are pending for a memorial service, burial and reception at Ft. Myer and Arlington National Cemetery.

On Thursday, February 27, 2014, **Dr. Robert O. Gordon**, orthopedic surgeon and clinical professor at Georgetown University Hospital, passed away at his residence in Washington, DC. Beloved husband of Antonia (Toni) Gordon; loving father of Kimberly (Richard) Schoonover and Hayley (Luca) Pivato; cherished grandfather of Lily, Matteo and Leonardo. A memorial service was held at Washington Hebrew Congregation, 3935 Macomb Street, NW, Washington, DC 20016 on Sunday, March 2. In lieu of flowers, memorials may be made in Dr. Gordon's name to Community Foundation of the Great River Bend, Bob Gordon Memorial Fund, 852 Middle Road, # 100, Bettendorf, IA 52722 to benefit the Schaefer Scholarship in Science for Bettendorf Community High School.