



JAMES  
RENWICK  
ALLIANCE

FALL 2002

## The Caucus Visits Nice and the Côte d'Azur

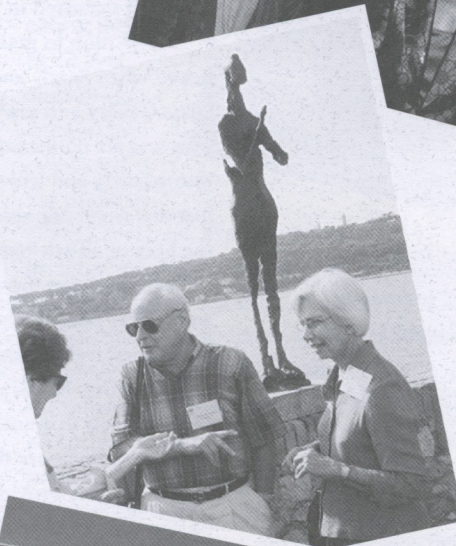
By Bob Sinclair

Bathed in sun and steeped in history, the "sky-blue coast" of southeastern France is one of the world's premier tourist destinations. In September the Craft Leaders Caucus found a world-class craft tradition as well. In its first real venture outside the English-speaking world (bilingual Montreal was an exploratory foray), the Caucus discovered a new craft vocabulary—a vocabulary reflecting the influence of the last century's artistic giants (Picasso, Matisse, Miro, Chagall, Léger) who lived out their lives here. Ably leading the group into this new territory was Gallery Caucus member Michael Rotenberg. Gallery owner Serge Lechaczynski and ceramist Daphne Corregan, who was born in Pittsburgh but has lived in France since childhood, provided indispensable local support.

The group was based in a hotel overlooking the old city of Nice and the promenades along the beach. It spent much of its time inland, visiting studios and galleries hidden in the ancient hill towns, but of course it made the pilgrimage to Antibes and the Grimaldi Castle, where Picasso established his studio after World War II. This is where he delved most deeply into the possibilities of clay, and a fine collection of his ceramics along with the other work of this extraordinarily fecund artist is on display there. The group encountered Picasso again in Vallauris, where his "War and Peace" chapel, inspired by the wars of the twentieth century, confronts the viewer with the stark challenges of the secular world. The contrast with Matisse's other-worldly Chapel of the Rosary in Vence, or with Chagall's ethereal "Biblical Message" museum in Nice, could not have been more striking.

The Fernand Léger Museum was also on the itinerary, as were the Museum of Modern and Contemporary Art in Nice and *Galerie Beaubourg*

*continued on page 3*



▲ (From top to bottom) Daphne Corregan (left) with Stanley and Evelyn Asrael.

Leonard and Frances Burka at the Picasso Museum at Grimaldi Castle in Antibes.

The Fernand Léger Museum.

Daphne Corregan explains her open-air ceramics gallery, which displayed her own work along with that of a dozen ceramist colleagues.





## JAMES RENWICK ALLIANCE

### Quarterly

Fall 2002

The *Quarterly* is published four times a year by the James Renwick Alliance, an independent national nonprofit organization created to celebrate the achievements of America's craft artists and to foster scholarship, education, and public appreciation of their art. Founded in 1982, the Alliance helps support our nation's showcase of 20th century American craft, the Renwick Gallery of the Smithsonian American Art Museum, Washington, DC.

#### Editor

Bob Sinclair

#### Graphic Design

Cox & Associates, Inc.

#### Contributing

Barbara Berlin  
Brenda Erickson  
Bob Sinclair

#### Photography

Sandy Mitchell  
Paul Parkman  
Bob Sinclair

#### James Renwick Alliance

Deidre Healy  
Director

4405 East-West Highway  
Suite 205-B  
Bethesda, MD 20814

301-907-3888  
fax 301-907-3855  
Web [www.jra.org](http://www.jra.org)

# From the President

My introduction to contemporary craft occurred in a way that I suspect is common to many of us: at a gallery. It happened when Sandy and I visited Sally Hansen's Glass Gallery and saw works by Marvin Lipofsky. This was art unlike any I had seen before and I was immediately and irreversibly enthralled. This is just one small example of the way galleries affect the lives of all art-lovers.

Galleries serve the arts community in special ways. They educate their clients in everything from art history, techniques, and biography to esthetics and narrative. By curating exhibits, they enable us to see objects in a unique, relational context and allow us to compare the works of many artists. Moreover, they provide a critical structure of support and promotion for the artists, bringing craft talent to the attention of collectors and museums that would otherwise have gone unnoticed. Lately many galleries, in order to create easier access, have placed their exhibitions on the Web and/or taken their galleries on the road, e.g., SOFA.

Galleries are a critical part of Alliance activities. On Craft Study Tours they are invaluable in organizing the various venues of artists and collectors. They frequently host special receptions for us, and for that we are especially grateful. And because gallery owners provide a unique perspective on the craft world, we have invited them to sit on the Alliance board.

Recognizing the close relations between galleries and the Alliance, we established a Gallery Caucus membership program several years ago under the auspices of David Stearman. We thank the following Gallery Caucus Members for their continuing generous support of the James Renwick Alliance.

#### **Alianza**, Boston, MA

Karen and Michael Rotenberg

#### **Blue Spiral 1**, Asheville, NC

John E. Cram

#### **del Mano Gallery**, Los Angeles, CA

Jan Peters and Ray Leier

#### **Donna Schneier Fine Arts**, New York, NY

Donna Schneier and Leonard Goldberg

#### **Holsten Gallery**, Stockbridge, MA

Ken Holsten and Jim Schantz

#### **Leo Kaplan Modern**, New York, NY

Scott Jacobsen

#### **Ferrin Gallery**, Lenox, MA and Croton, NY

Leslie Ferrin and Donald Clark

#### **Maurine Littleton Gallery**, Washington, DC

Maurine Littleton

#### **Mobilia Gallery**, Cambridge, MA

Libby and Jo Anne Cooper

#### **R. Duane Reed Gallery**, St. Louis, MO

Duane Reed

#### **Sansar Gallery**, Bethesda, MD

Veena Singh

#### **Snyderman Works Gallery**, Philadelphia, PA

Ruth and Rick Snyderman

#### **Sybaris Gallery**, Royal Oak, MI

Arlene Selik and Linda Ross

#### **The Glass Gallery**, Bethesda, MD

Sally Hansen

#### **Wexler Gallery**, Philadelphia, PA

Lewis Wexler

Finally, Deidre Healy is joining our professional staff as Director. I hope you have a chance to meet her in the coming months. Camrin Emmons-White is departing, and we all thank her for her significant contributions to the JRA and wish her the best.

**Norman Mitchell**  
President



## Côte d'Azur continued from page 1

in Vence, with its stunning outdoor collection of contemporary sculpture. For a change of pace the group visited the *Belle Époque* villa of the Baroness Ephrussi de Rothschild, with its 360-degree view of the coastline, its classic formal garden, and its extensive art and antiques collection.

This rich heritage was the setting for the group's visits to craft artists and galleries. Jean, the group's intrepid driver, maneuvered his huge bus along twisting roads to reach hilltop towns like Vence, St-Paul, Biot, and Haut-de-Cagnes. He

drove west to Draguignan, where Daphne Corregan had set up an open-air gallery displaying her own work along with that of a dozen ceramist colleagues from throughout the region—including her husband, Gilles Suffren, who had also designed their beautiful home and done most of its construction. Several participants said this was one of the finest craft experiences of any Alliance trip.

Ceramics was the focus for much of the trip, in fact. The visit coincided with the biennial international ceramic exhibition in Vallauris, where superb work from six continents was on display. The group saw a stunning array of prize-winning entries from previous biennials at the *Musée de la Poterie*, which was also showing current collaborative work of leading French designers and ceramists. And at *Galerie L'événement* in the Vallauris town center, Richard Karsenty and his wife Crystel had assembled many established ceramists to discuss their work. For many in the group, the center of

attention was the whimsical work of Roger Capron, whose pieces were also on display at the nearby *Galerie Sassi-Milici*. Around the corner was the studio of Gilbert Portanier, where many of his large, painterly pieces were on view.

Ceramics were a feature of the first visit to Biot as well: the colorful, witty (and sometimes R-rated) sculptures of Jacky Colville, where one could see the influence of both Picasso and Miro, and the geometric pieces of Jean-Paul Van Lith, who works in both clay and glass. But on the second Biot foray it was all glass: Serge Lechaczynski's *Verrerie de Biot*, where production pieces were being made; and his *Galerie Internationale de Verre*, where the group found spectacular pieces of art glass. Serge and his father, Jean, then invited the group to their homes to see still more glass pieces of the highest quality from their own collections.

Other craft media were not neglected. Haut-de-Cagnes was the town for jewelry: *Galerie Solidor* next to another Grimaldi Castle at the old town's highest point (Grimaldi is the family name of the grand dukes of nearby Monaco, and there are Grimaldi castles all over the Côte d'Azur); and the studio of Esty Grossman, who had created an entire environment of her own in a former wine cellar where two of the town's crooked streets converge. The group lingered there for an outside cocktail reception that featured fresh figs, sweet green plums, and orange wine. At the *Galerie Joël Scholtès* the group found jewel-like fiber pieces by Albert Chubac as well as paintings by Joël's father, Armand. And Martine Lachal's *Galerie L'Île en*

*continued on page 5*

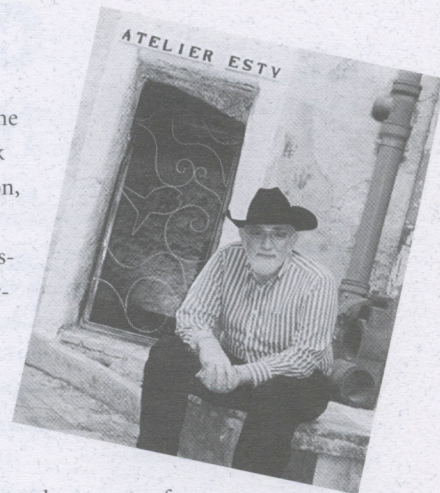
▲ (Left from top to bottom) Laurel Mendelsohn tries out Jacky Colville's R-rated chair while Leonard Burka watches.

Michael Rotenberg (left) and Norman Mitchell (right) with Jacky Colville and his wife.

Glass artist Serge Lechaczynski and Dudley Anderson.

Norman Mitchell (left) with Jean and Serge Lechaczynski in Jean's home.

(Above right) Arnold Berlin outside Esty Grossman's former wine cellar turned studio where the group lingered for a cocktail reception.





## Craft Leaders Caucus Benefits

(\$1000, \$1500 double)

The *Quarterly*, the newsletter published four times yearly with information about Alliance activities, Renwick Gallery exhibits and programs, and items of general interest to craft enthusiasts, including a calendar of events.

Invitations to Renwick Gallery openings and exhibitions tours conducted by artists and curators.

Unique craft study tours to artists' studios, private collections, and special exhibitions within the United States and abroad.

Opportunity to give a donor-level membership to a friend.

A twenty percent discount in the Renwick museum shop.

Complimentary book/catalog of a Renwick Gallery exhibition.

Vote on acquisitions to be funded by the Alliance for the Renwick Gallery.

Invitation to special programs.

Name listed on plaque in Renwick Gallery lobby.

# Craft Leaders Report

## News from the Craft Leaders Caucus

by Barbara Berlin

The Craft Leaders Caucus, the upper membership level of the James Renwick Alliance, continues to thrive. We welcome our newest members, Florence Duhl of New York City and Peggy Greenfield of Royal Oak, MD.

The Caucus provides special benefits, among them two craft study tours each year and a variety of unique events. On November 1st we will have an evening at the Washington home of Rebecca and Gary Stevens, where Caucus members will enjoy a light supper and a program with a surprise focus. On January 9-12 we travel to Florida for an Educational Retreat in Palm Gardens led by Sue and Bill Kolodner. The retreat will feature panel discussions with museum curators, artists, gallery owners, and collectors. The moderator will be Kenneth R. Trapp, the Renwick Gallery's curator-in-charge. We will also visit private collections and Art Palm Beach, an internationally known art exhibition.

Our Fall trip to Nice and the French Riviera, led by Gallery Caucus member Michael



Rotenberg (assisted by his wife Karen), was a wonderful opportunity to learn about French contemporary craft and of course much more. You can read more about the trip elsewhere in the *Quarterly*. We will visit Tacoma and Seattle, Washington on May 14-18 under the leadership of Judy Davis, and on September 10-14 Alan Jacobs will lead us on a tour of western Massachusetts and the Berkshires.

Sharon Buchanan and Fran Burka are already making plans for Caucus Day – April 25 – during Craft Weekend 2003. Plan to join your fellow craft lovers for the fun, the fellowship, and the opportunity to support crafts that make the weekend a high point of the Alliance year.

The Alliance board has voted to raise the Caucus membership fee for couples to \$1500 while keeping individual memberships at \$1000. This remains a very modest cost for such rewarding activities. To join the Caucus, to learn more about benefits, or to be in touch with Caucus members during your travels, call Deidre Healy, phone (301) 907-3888, fax (301) 907-3855. You'll be very glad you did. ■



▲ (Above) Wanda Rappaport, Clemmer Montague, and Joan Wessel on the Caucus trip to France.

(Left) Laurel Mendelsohn and Bill and Sue Kolodner.

## REGISTRATION

☐ Yes, I want to join the James Renwick Alliance at the level of Craft Leaders Caucus (\$1000, \$1500 double):

☐ Renewal

☐ New Member

Names(s) \_\_\_\_\_  
(as you wish to be listed)

Street Address \_\_\_\_\_

City \_\_\_\_\_

State \_\_\_\_\_ Zip \_\_\_\_\_

Phone \_\_\_\_\_

Fax \_\_\_\_\_

### Circle One:

Check Enclosed    VISA    MasterCard    Discover

Please make check payable to James Renwick Alliance

Card number \_\_\_\_\_

Expiration date \_\_\_\_\_

Signature \_\_\_\_\_

### Please return this completed form to:

James Renwick Alliance  
4405 East-West Highway, Suite 205-B  
Bethesda, MD 20814

See page 11 for information on other membership levels.





▲ (From top to bottom) Norman Mitchell presents Michael Rotenberg with a token of the group's appreciation.

Arnold Berlin and Florence Duhl take a break.

Joan Wessel and Esty Grossman show off two of Esty's pieces.

## Côte d'Azur continued from page 3

Terre in St. Paul-de-Vence, while emphasizing ceramics, showed a wide spectrum of craft art.

The last stop of the trip was once again Biot, where a farewell reception and dinner brought the group together with most of the people it had visited over the previous five days. All those involved in putting the trip together came in for praise and thanks, but special kudos went to

Michael Rotenberg, Daphne Corregan, and Serge Lechaczynski, whose complementary talents made the visit what it was: the model of a craft study tour. The participants came away not just with examples of the fine craftsmanship they had seen but—much more important—with a new appreciation of the Côte d'Azur in the worlds of both art and craft. ■

## Craft Events Elsewhere

by Brenda Erickson

► Silver, ruby, and golden anniversary greetings are in order for a number of organizations:

■ **25/Twenty-Five: An Anniversary Celebration** at the San Jose Museum of Quilts and Textiles from November 16 through January 19.

■ The **25th Urban Glass Anniversary Exhibition** from November 8-24 at the Corning Gallery at Steuben, New York, NY.

■ The **40th Anniversary Exhibition** through January 19 at the Institute of American Indian Arts in Santa Fe.

■ **Paper to Gold: A Fifty-Year Anniversary Exhibition** by Florida craftsmen from January 11 through February 28, 2003 at the Florida Craftsmen Gallery, St. Petersburg, FL, (727) 821-7391.

► **Judy Chicago, The Dinner Party**, is being reprised at the Brooklyn Museum of Art until February 9, 2003. Meanwhile, **Judy Chicago, A Survey**, continues at the National Museum of Women in the Arts in Washington, DC until January 5, 2003.

► Also in New York City is **Great Masters of Folk Art** from the Fomento Cultural Banamex, A.C. through March 15, 2003 at National Museum of the American Indian; and **Quilts of Gee's Bend** at the Whitney Museum of American Art from November 21 through March 2, 2003.

► **William Morris: Elegy**, an expression of his response to the tragedy of 9/11, will be at the American Craft Museum, New York, NY, from January 17 through May 20. The exhibition will then travel.

► Historical crafts can be viewed in **The Wilson Potters: African-American Enterprise in 19th Century Texas**, showing from November 3 through March 3, 2003, at the Houston Museum of Fine Arts.

► **The Jewelry of Robert Ebendorf** presents a retrospective of his work from January 16 through March 9, 2003 at the North Carolina State University Gallery of Art & Design, Raleigh, NC. The show can also be seen at the Arkansas Arts Center in Little Rock beginning on May 18.

► **Neil Forrest**, who teaches at the Nova Scotia College of Art and Design, will have a solo exhibit at Pewabic Pottery in Detroit from January 10 through February 22. Concurrently, Pewabic will mount a Pewabic Historic Exhibit.

► The Midwest is hot with fiber, with **Time and Space Constructed: Tradition and Innovation in Contemporary Tapestry** showing from November 24 through January 26 at the Goldstein Museum, St. Paul, MN, and **Sign of the Times: Meaning and Design in Textiles** at Leigh Yawkey Woodson Art Museum, Wausau, WI from January 25 through March 30, 2003.

► Speaking of heat, **Some Like It Hot: Iron Work** runs from December 8 through February 16, 2003 at the National Ornamental Metal Museum, Memphis, TN.

► Lloyd Herman, Founding Director of the Renwick Gallery, juried **Annual Craft Forms 2002**, which is on view from December 6 through January 27, 2003 at the Wayne Art Center, Wayne, PA.

continued on page 9



# Fall 2002 - Spring 2003 James Renwick Alliance Artists' Series Focus on Glass

In conjunction with the fall 2002 exhibits *Four Discoveries in Craft* and *George Catlin and His Indian Gallery* and the spring 2003 exhibit of the Permanent Collection at the Renwick Gallery of the Smithsonian American Art Museum, the James Renwick Alliance is sponsoring a Distinguished Artists' Series by master glass artists. The first two events will be workshops in which each artist will demonstrate his or her distinctive techniques and discuss the aesthetic concepts and inspiration that underlie them. Each event will be from 10 am until 3 or 4 pm. The locations are listed with each event. The final event will be a tour of architectural glass in both liturgical and non-liturgical sites to compare and contrast the glass in those locations within the context of history and design.

The two demonstration workshops will be \$45 for members and \$50 for nonmembers. The site tour of architectural glass will be \$75 per person for members and \$85 for nonmembers. This includes bus transportation and lunch.

On the Sunday following each of the two Saturday workshops, each artist will present a slide lecture of his/her work. On the Sunday following the Saturday tour, artists will join Kenneth Trapp, Curator-in-Charge of the Renwick Gallery, in a panel discussion of contemporary architectural glass in the context of history. The panel discussion and slide lectures will take place in the Grand Salon of the Renwick Gallery at 3 pm. They are free and open to the public.

## ARTISTS' SERIES: "FOCUS ON GLASS" REGISTRATION

To sign up as a subscriber for the artists' series workshops, please fill out the form and mail or fax, along with payment, to the JRA office.

### Artists' Series: "Focus on Glass" Registration

Attendance is limited and preference will be given to series subscribers. The Alliance cannot give refunds in case of cancellation. All participants are responsible for providing their own food and beverage except for the tour on May 3, 2003. A list of paid participants will be at the door for each event. Call the JRA office at (301) 907-3888 for more information.

**I would like to attend these individual workshops/tour**  
(check each one you wish to attend)

☐ **Preston L. Singletary, Saturday, January 18, 2003**

☐ \$45 members ☐ \$50 non-members

☐ **Judith Schaechter, Saturday, March 22, 2003**

☐ \$45 members ☐ \$50 non-members

☐ **Architectural Glass Tour, Saturday, May 3, 2003**

☐ \$75 members ☐ \$85 non-members

Name(s) \_\_\_\_\_

Address \_\_\_\_\_

City \_\_\_\_\_

State/Zip \_\_\_\_\_

Telephone: Day \_\_\_\_\_

Evening \_\_\_\_\_

Guild affiliation, if any \_\_\_\_\_

My total payment is \$ \_\_\_\_\_ I am paying by Check \_\_\_\_\_ or Credit Card \_\_\_\_\_

Credit card number (Visa, MasterCard, or Discover) \_\_\_\_\_

Expiration date \_\_\_\_\_

Name on credit card \_\_\_\_\_

Make checks payable to the James Renwick Alliance.

Please send your payment with this form to:

4405 East-West Highway  
Suite 205-B  
Bethesda, MD 20814

Or fax to (301) 907-3855



## WORKSHOPS/DEMONSTRATIONS



### WORKSHOP

#### *Artists' Series Workshop: Preston L. Singletary*

**Demonstration of the uses of glass to express the ideas and concepts of his North West coast Native heritage**

*Saturday, January 18, 2003*

**Preston L. Singletary, Seattle, Washington.** Award winning artist, Preston Singletary, has exhibited and lectured internationally. He has worked with some of the most prominent glass makers in the world, and he has a strong and continuing relationship with Pilchuck Glass School. Preston states, "In my work, I have an eclectic interest in styles. My most current works are North West coast Native designs in glass. Working with these designs gives me a sense of purpose while paying homage to my family and essentially, my ancestors. By researching my roots of Family/Tribe, it gives me a stronger foundation by comparing an older understanding of the world to my current notion of society".

Preston's Saturday demonstration/workshop will be held in the Glassblowing Studio of Rick Sherbert located in Glen Echo Park, Mac Arthur Blvd, Glen Echo, MD. Preston will demonstrate how he uses the medium of glass to express the ideas and concepts of his North West coast Native heritage.



### WORKSHOP

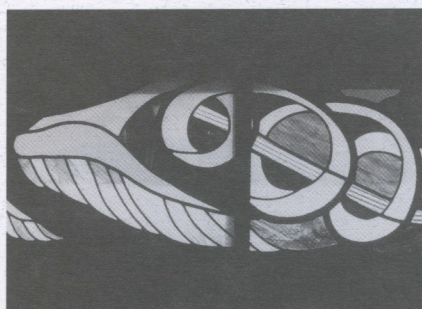
#### *Artists' Series Workshop: Judith Schaechter*

**Explanation of translating sketches into glass and the creation of a demonstration panel**

*Saturday, March 22, 2003*

**Judith Schaechter, Philadelphia, Pennsylvania.** Judith creates her unique glass panels utilizing the age old techniques of cutting, grinding, etching, and painting flat glass in her very contemporary and individual way. Her work has been exhibited widely, and she is the recipient of many grants including two National Endowment for the Arts Fellowships. Her work is included in numerous private collections, as well as, many museum collections including The Renwick Gallery. Judith has taught at The Pilchuck Glass School, Rhode Island School of Design, and The University of the Arts, and her work has been included numerous times in the "New Glass Review" of the Corning Museum of Glass.

In her Saturday workshop, held at Weisser Glass Studio, 10520 Connecticut Avenue in Kensington, MD, she will demonstrate by beginning with her sketches and explain how she translates them into glass. She will then create a sample section of a panel demonstrating all of the many steps required to complete one small part of a total panel. The piece will be fired overnight, and she will share the finished product at her slide presentation on Sunday.



### TOUR

#### *Artists' Series Tour: Dieter, Golkuhle*

**Tour of selected sites which contain significant glass works**

*Saturday, May 3, 2003*

**Dieter, Golkuhle, Reston, Virginia.** Dieter immigrated to the United States from Germany in 1962. His work with glass spans almost half a century and half the globe. He has worked in collaboration with many noted stained glass artists on architectural glass projects which include such windows as the West Rose "Creation" window of the National Cathedral, as well as, numerous other windows in both the United States and Europe. He has restored multi-layered Tiffany windows at St. Mark's Church, Mt. Kisco, New York, and 20th century windows from the House Chamber, Pennsylvania State Capitol. The chapels of Duke University and Princeton University contain windows that he has restored and/or fabricated. Dieter has been a consultant and lecturer for the Smithsonian Institution, the Smithsonian Folklife Festival, and *Scientific American*.

On the Saturday site tour of architectural glass, Dieter will lead the group in an exploration of "the adventures in light and color" of several stained glass artists in what Charles J. Connick called, "A Glassman's Holiday." The sites, each of which contains significant glass works, will provide ample opportunity to discuss numerous approaches to the art of stained glass in the context of history and design.

*continued on page 8*



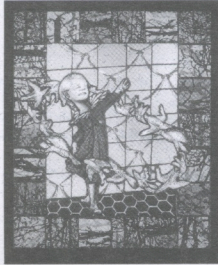
## Renwick Alliance Artists' Series continued from page 7

### FREE LECTURES

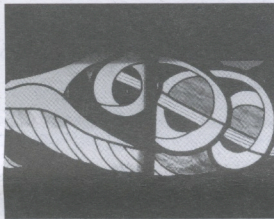
#### *Distinguished Craft Artist Lectures*



**Preston Singletary**



**Judith Schaechter**



**Dieter Golkuhle**

*Sunday, January 19, 2003*

**Preston Singletary's** slide presentation in the Grand Salon of the Renwick Gallery is entitled: "The Shaman Who Went into the Fire". He will discuss his focus as a Native American artist working in glass, which includes his early training as a glassblower in classic Italian traditions followed by the progression into the study of his roots and the development of artwork that speaks more personally to his family background. This talk will also include past and current collaborative projects with other native artists who interpret their cultural art work with glass. This lecture is free and open to the public.

*Sunday, March 23, 2003*

In the Grand Salon of the Renwick Gallery, **Judith Schaechter** will delineate in her slide presentation the development of her work showing some examples from her childhood. She will discuss the inspiration for the pieces she creates along with her thoughts about design. She will also show some process slides which will elucidate the previous day's demonstration. This slide presentation is free and open to the public.

*Sunday, May 4, 2003*

After a brief slide presentation in the Grand Salon of the Renwick Gallery, **Dieter Golkuhle** will join a panel led by Kenneth Trapp, Curator-in-Charge of the Renwick Gallery, in a discussion of contemporary architectural glass as it relates to historical glass and past design styles. This presentation is free and open to the public.

*(Biographies for each of the artists are provided in the workshop descriptions, page 7.)*

## Welcome, New Alliance Members!

### Craft Leaders Caucus

Florence Duhl  
New York, NY  
Peggy Greenfield  
Royal Oak, MD

### Sponsor

Miriam Bonner  
Alexandria, VA

### Donors

Andrea Falk  
Arlington, VA  
Patricia M. Kaylin  
Arlington, VA  
Sue Marx Smock  
Washington, DC  
Anita & Burton Reiner  
Bethesda, MD  
Dr. & Mrs.  
James E. Johnson  
Washington, DC

Donna Barnett  
Boca Raton, FL  
Steven & Susan M. Pavsner  
Bethesda, MD  
Harriet Reiss &  
Harley Perkins  
Baltimore, MD  
Helene & William Safire  
Chevy Chase, MD

### Guild

Karen Stults  
Takoma Park, MD  
Nancy Weisser Underwood  
Kensington, MD  
Ann Byron  
Silver Spring, MD  
Genevieve Davison  
Springfield, VA



## Craft Events Elsewhere continued from page 5



▲ (From top to bottom)  
From Craft Weekend 2002:  
Distinguished Craft Educators  
Gerhardt Knodel, Rosanne  
Somerson, and Wayne Higby.  
Past and present Renwick  
Gallery heads Michael  
Monroe, Kenneth Trapp,  
and Lloyd Herman.

► For those of you escaping to sunny Florida, **Fire and Form: The Art of Contemporary Glass** is at the Norton Museum of Art, West Palm Beach from January 1 through March 25.

► Karen Koblitz is this year's guest curator for the **59th Scripps Ceramic Annual** at the Ruth Chandler Williamson Gallery in Claremont, CA, from January 25 through April 6. In four decades as curator, Paul Soldner has established the national and contemporary reputation for this annual exhibition, which this year will again issue a catalogue.

► Other west coast events include **Wearable Expressions**, from November 15 through January 12, 2003 at Palos Verdes Art Center, Rancho Palos Verdes, CA. Historic and traditional costumes can be seen in **Miracles and Mischief: Noh and Kyogen Theater in Japan** at the Los Angeles County Museum of Art from November 10 through February 2, and in **MATSURI! Japanese Festival Arts** at the Fowler Museum of Cultural History at UCLA.

► The **2003 NCECA conference** will be in San Diego on March 12-15. As usual, the conference

will be accompanied by numerous ceramic shows at public and commercial art spaces throughout the area.

► The mountain states are mounting shows of interest, including **Jun Kaneko: Ceramics and Paintings** from November 7 through January 5, 2003 at the Holter Museum of Art, Helena, MT. Two shows: **Suzanne Marshall: Appliqué Quilt Artist**, and **Narrative Portraits** can be seen from November 4 to January 4, 2003 at the Rocky Mountain Quilt Museum, Golden, CO.

► Our Latin American heritage is highlighted in **Cerámica y Cultura: The Story of Spanish and Mexican Mayólica**, at the Museum of International Folk Art, Santa Fe for an ongoing show that continues from November 17 through September 7, 2003

► The Glasmuseum in Ebeltoft, Denmark will present a solo exhibition of **Richard Marquis** from November 30 through April 6, 2003.

Link onto the Alliance Web site calendar at [www.jra.org](http://www.jra.org) for more listings of exhibitions and events.

## From the New Director...

Greetings to the members of the board, volunteers, members and supporters of the Renwick Alliance! My name is Deidre Healy, and I am very pleased to join the Renwick Alliance as its first Director. This is indeed an exciting opportunity! My professional background includes experience in program management, marketing and communication, and foundation fundraising with two national not-for-profit organizations. Additionally,

I hold a Master's Degree in Management of Not-for-Profit Organizations from the University of Maryland. I also enjoy serving as a board member and volunteer with a community-based arts organization, The College Park Arts Exchange.

I look forward to working with you toward the continuing success of the Renwick Alliance.

My best wishes to you!

— Deidre

### Native American Crafts at the Renwick

Craft lovers should note the many Native American craft demonstrations scheduled in connection with the Renwick Gallery's George Catlin exhibit. The Smithsonian American Art Museum, in collaboration with the Department of the Interior's Indian Craft Shop, is also sponsoring an Indian craft fair in early December. ■



# Upcoming Events

*James Renwick Alliance and Related Events*

*Alliance-sponsored events  
are shown in bold italic.*

## October

### October 18-20

25th Annual Rug Convention, Textile Museum

### October 19

Family Day, 2-5 pm, Renwick Gallery, Grand Salon.

The Big Day Family (Crow) from Montana will entertain with traditional Native American stories and demonstrations on how to make Crow dolls, turkey feather war bonnets, and parfleches, used by Plains Indians to store and transport food and clothing. Make your own parfleche using paper, crayon, and colored yarn.

### October 23

SOFA-Chicago Opening Night, Charity Preview

### October 24-27

SOFA-Chicago, Navy Pier

### October 25

SOFA-British Craft Council Continental Breakfast, Navy Pier, 10-11 am

### October 26

SOFA- International Reception, 6 pm, Navy Pier, Terrace A East

### October 26

Renwick Alliance Brunch, SOFA, Navy Pier, 10 am

## November

### November 1

Craft Leaders Caucus supper, home of Rebecca and Gary Stevens

### November 2

Renwick Alliance Craft Study Tour, Richmond, VA

### November 3

Native American Craft Demonstration, 1 pm, Renwick Gallery, Grand Salon

Vanessa Jennings (Kiowa) demonstrates traditional cradleboard making and beadwork. Vanessa learned these skills from her grandmother and continues to work in the tradition of her ancestors. She has received a National Heritage Fellowship and is considered a "Living National Treasure."

### November 7-11

Philadelphia Museum of Art Craft Show, Pennsylvania Convention Center

### November 8-10

Collectors' Weekend: "Mastery in Clay: New Work." The Clay Studio, Philadelphia, PA

### November 14

Opening Night Charity Preview, Washington Craft Show

### November 15-17

Washington Craft Show, Washington Convention Center

### November 15

Renwick Alliance Sponsored Lectures, Washington Craft Show: David McFadden, 11 am; Rick Snyderman, 2 pm

### November 16

Family Day, 2-5 pm, Renwick Gallery, Grand Salon  
Join Emil Her Many Horses (Oglala Sioux) from the National Museum of the American Indian for a demonstration of traditional Native American beading techniques, and then make a beaded necklace of your own.

### November 23

Washington Guild of Goldsmiths' show opens, Target Gallery, Torpedo Factory, Alexandria, VA. Closes January 12.

## December

### December 1

Native American Craft Demonstration, 1 pm, Renwick Gallery, Grand Salon

Running Deer (Tsalgi and Seneca) will demonstrate traditional Native American flute carving techniques and play a few songs as he works.

### December 6

Indian Market Preview, 6:30-9 pm, Renwick Gallery

A special evening event and sneak shopping preview to celebrate American Indian creativity, featuring a variety of one-of-a-kind crafts by Native Americans. A reception to meet the artists will follow in the Grand Salon. There is a \$50 registration fee; pre-registration is required. For information and reservations, call (202) 275-1585. Checks should be made out to the Smithsonian American Art Museum. Please send checks to Emily Chamberlin, Smithsonian American Art Museum, External Affairs, P.O. Box 37012, VB 3100, MRC 970, Washington, D.C. 20013-7012.

### December 7-8

Indian Market, 10 am-4:30 pm, Renwick Gallery  
Visitors can purchase a wide range of craft items from knowledgeable artists. Demonstrations by the artists will be held in the Grand Salon throughout the day: Marietta Juanico from the Acoma Pueblo will show her pottery techniques, Tony and Ola Eriacho from the Zuni Pueblo will demonstrate the inlay-technique used in their jewelry, and Gerald Barnes, Passamaquoddy, will demonstrate his split ash basket technique. Planned in conjunction with the U.S. Department of the Interior's Indian Craft Shop.

## January 2003

### January 9-12

Craft Leaders Caucus Educational Retreat at PGA National Resort, Florida. Coincides with Art Palm Beach.

► For further information on upcoming events, call Deidre Healy at (301) 907-3888, or visit the Alliance Web site at [www.jra.org](http://www.jra.org).

### January 18

Renwick Alliance Craft Artists Series, Studio of Rick Sherbert, 9 am-3 pm  
Preston Singletary will lead an interactive workshop on glassblowing.

### January 19

Distinguished Craft Artists Lecture Series, 3 pm, Renwick Gallery, Grand Salon  
Glassblower Preston Singletary gives an illustrated lecture on the influence his Native American (Tlingit) heritage has had on the imagery seen in his pieces. Cosponsored by the James Renwick Alliance.

## Upcoming Events

### March 15

Renwick Alliance Craft Study Tour, Washington, DC

### April 23

Opening Night Charity Preview, Smithsonian Craft Show

### April 24-27

Smithsonian Craft Show

### April 24-27

Renwick Alliance Spring Craft Weekend

### April 24

Acquisitions Meeting (By Invitation Only)

### April 25

Caucus Day (Caucus Members & Patrons Only)

### April 25

Patrons' Dinner (Patrons Only)

### April 26

Symposium

### April 26

Benefit and Craft Auction

### April 27

Brunch

### May 15-18

Craft Leaders Caucus Study Tour, Tacoma/Seattle, Washington

### July 11-12

Renwick Alliance Study Tour, Glass Weekend, Wheaton Village, NJ

### September 10-14

Craft Leaders Caucus Study Tour, The Berkshires & Western Massachusetts.

Most Thursdays the Renwick Gallery hosts a lecture at 1 pm entitled "Take a break at the Renwick." You may contact the Renwick Gallery at (202) 357-2531 for more details.



# Join the James Renwick Alliance

And enjoy learning about crafts while supporting the Renwick Gallery and helping build the nation's premier collection of contemporary American craft art.

## CONTRIBUTOR BENEFITS

### Donor (\$100)

The *Quarterly* newsletter and e-mail craft bulletin.

Invitations to Renwick Gallery openings and exhibitions tours conducted by artists and curators.

Unique craft study tours to artists' studios, private collections, and special exhibitions.

A twenty percent discount in the Renwick museum shop.

### Guild (\$50)

*For craft artists*

Same benefits as Donor, plus

Reduced fee for workshops.

### ART (Alliance for the Renwick Tomorrow) (\$70) *For contributors under the age of 40*

Same benefits as Donor.

### Sponsor (\$250)

Same benefits as Donor, plus

Complimentary book/catalog of a Renwick Gallery exhibition.

### Sustainer (\$500)

Same benefits as Sponsor, plus

One annual gift membership at the Donor level.

### Craft Leaders Caucus

(\$1000, \$1500 double)

Same benefits as Sustainer, plus

Vote on acquisitions to be funded by the Alliance for the Renwick Gallery.

Invitation to special programs.

Name listed on plaque in Renwick Gallery lobby.

Opportunity to participate in extended craft study tours within the United States and abroad.

### Gallery Caucus Member (\$1000)

Same benefits as Craft Leaders Caucus, plus

Publicity for your gallery, Web site link, and more. Call (301) 907-3888 for details.

### Benefactor (\$2500)

Same benefits as Craft Leaders Caucus, plus

Private tour for four at craft collector's home.

### Grand Salon Patron (\$5000)

Same benefits as Benefactor, plus

Free admission for two to all Craft Weekend activities (a \$1,200 value).

Recognition in the invitation and Benefit Auction Program for Craft Weekend.

### Renwick Society (\$10,000 and up)

Same benefits as Grand Salon Patron, plus

A work of art purchased by the JRA for the Renwick Gallery will honor the donor.

## Questions?

Contact Deidre Healy  
Tel. (301) 907-3888  
Fax (301) 907-3855  
jraoffice@jra.org

## REGISTRATION

**Yes, I want to join the James Renwick Alliance at the level of:**

- ☐ **Donor** (\$100)
- ☐ **Guild** (\$50) for craft artists
- ☐ **ART** (\$70) for contributors under the age of 40
- ☐ **Sponsor** (\$250)
- ☐ **Sustainer** (\$500)
- ☐ **Craft Leaders Caucus** (\$1000, \$1500 double)
- ☐ **Gallery Caucus Member** (\$1000)
- ☐ **Benefactor** (\$2500)
- ☐ **Grand Salon Patron** (\$5000)
- ☐ **Renwick Society** (\$10,000 and up)

\*A portion of your contribution is tax deductible.

**I wish to make a contribution to the James Renwick Alliance in the amount of**

\$ \_\_\_\_\_

☐ **Renewal**

☐ **New Member**

Names(s) \_\_\_\_\_  
(as you wish to be listed)

Street Address \_\_\_\_\_

City \_\_\_\_\_

State \_\_\_\_\_ Zip \_\_\_\_\_

Phone \_\_\_\_\_ Fax \_\_\_\_\_

e-mail \_\_\_\_\_

☐ **I have friends who would be interested in learning about the Alliance. Please call me for their names and addresses.**

### Circle One:

Check Enclosed    VISA    MasterCard    Discover

Please make check payable to James Renwick Alliance

Card number \_\_\_\_\_

Expiration date \_\_\_\_\_

Signature \_\_\_\_\_

If you would like to make your contribution in the form of securities, please call our office for instructions.

### Please return this completed form to:

James Renwick Alliance  
4405 East-West Highway  
Suite 205-B  
Bethesda, MD 20814





JAMES  
RENWICK  
ALLIANCE

4405 East-West Highway  
Suite 205-B  
Bethesda, MD 20814

PRESORTED STANDARD  
US POSTAGE  
PAID  
ROCKVILLE, MD  
PERMIT NO. 4297

# Quarterly

## Fall 2002

The Caucus Visits Nice and the Côte d'Azur . . . . .	1
From the President . . . . .	2
Craft Leaders Report . . . . .	4
Craft Events Elsewhere . . . . .	5
Alliance Artists' Series Focus on Glass . . . . .	6
Welcome, New Members! . . . . .	8
From the New Director... . . . .	9
Native American Crafts at the Renwick . . . . .	9
Upcoming Events . . . . .	10
Join the James Renwick Alliance . . . . .	11

